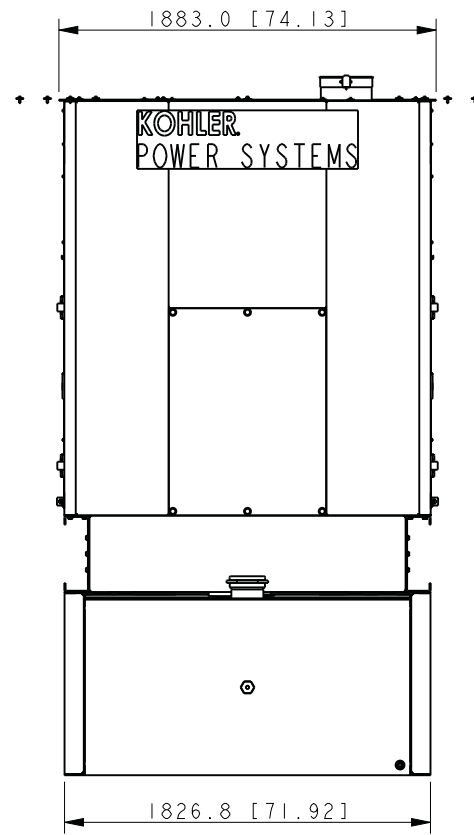
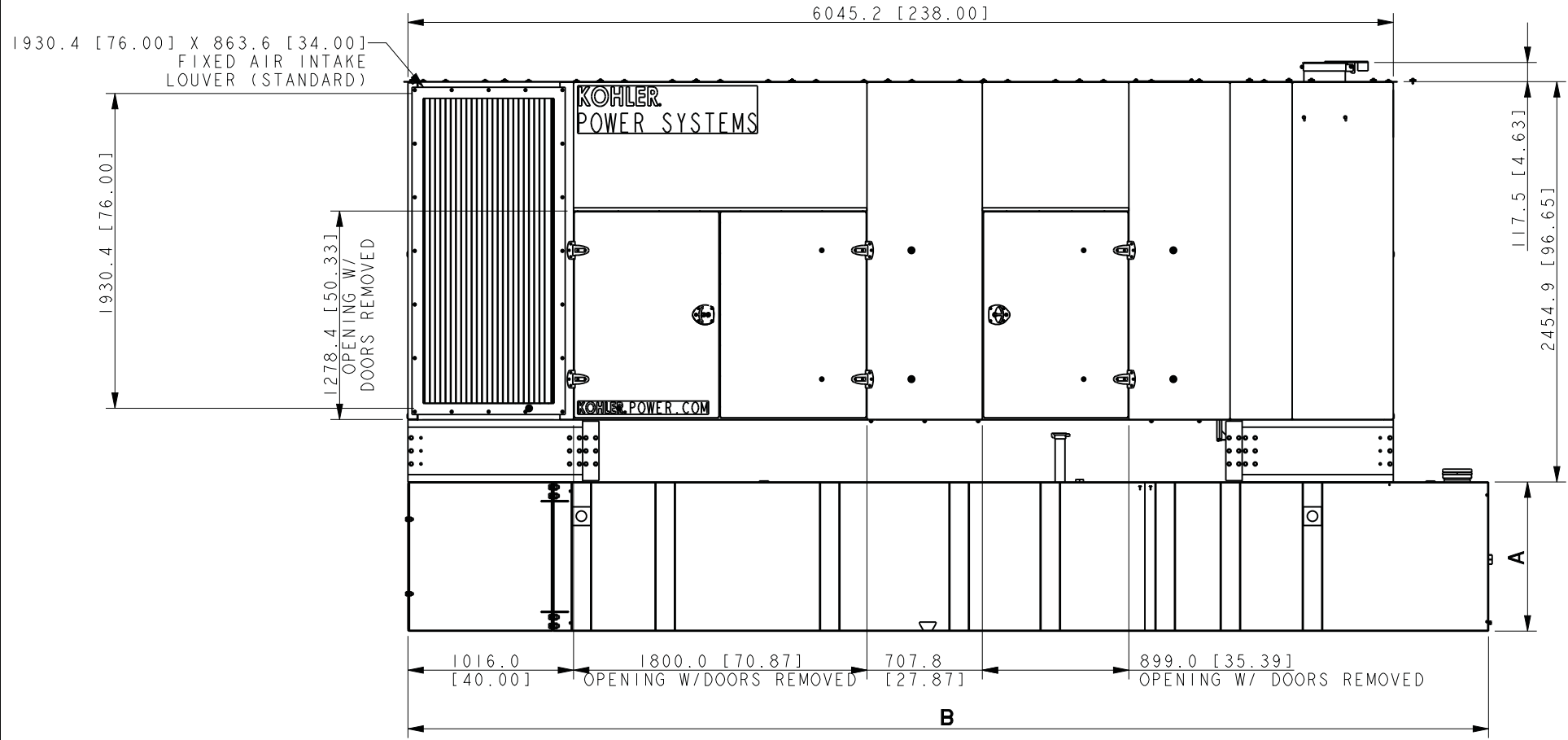


WEATHER ENCLOSURE



TANK INFORMATION				
LITERS [GALLONS] MIN HOURS	GENSETS	DIM A MM [INCH]	DIM B MM [INCH]	TANK WEIGHT KG [LBS] (NO FUEL)
2049 [541] 12 HOURS	500-600KW	406.4 [16.0]	6045.2 [238.0]	1444 [3183]
3910 [1033] 24 HOURS		736.6 [29.0]		1793 [3952]
5730 [1513] 36 HOURS		914.4 [36.0]	6629.4 [261.0]	2201 [4853]
7645 [2019] 48 HOURS				2665 [5876]
2039 [538] 12 HOURS STATE		381.0 [15.0]	6858.0 [270.0]	1591 [3508]
3930 [1038] 24 HOURS STATE		660.4 [26.0]		1893 [4173]
5757 [1520] 36 HOURS STATE		914.4 [36.0]	8458.2 [333.0]	2177 [4800]
7658 [2023] 48 HOURS STATE				2680 [5908]

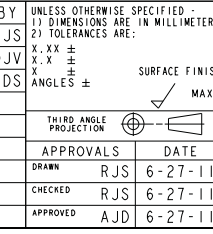
500-600KW REOZVB/C
STEEL/ALUM ENCL & TANKS
SOUND & WEATHER

NOTES:

FOR PROPER ASSEMBLY METHOD OF HARDWARE, USE G-585 AS A GUIDELINE.

REV	DATE	ON COMPOSITE DWGS. SEE PART NO. FOR REVISION LEVEL	BY	UNLESS OTHERWISE SPECIFIED - 1) DIMENSIONS ARE IN MILLIMETERS 2) TOLERANCES ARE:
-	6-27-11	NEW DRAWING [91023-12]	RJS	X.XX ±
A	3-19-12	(A-8) SEE SHEETS 5-6 [CT08748]	DJV	X.X ±
B	1-10-13	SHEET 7 ADDED [CT34883]	SDS	ANGLES ±

500-600 REOZVB		KG [LBS]
STEEL SOUND L2 ENCLOSURE WEIGHT	1483	[3270]
ALUM SOUND L2 ENCLOSURE WEIGHT	859	[1895]
STEEL WEATHER ENCLOSURE WEIGHT	1326	[2925]
ALUM WEATHER ENCLOSURE WEIGHT	703	[1550]

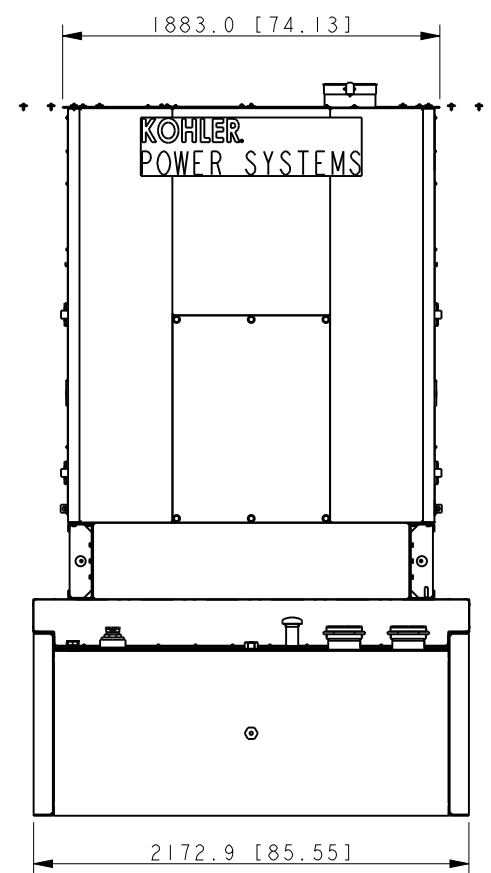
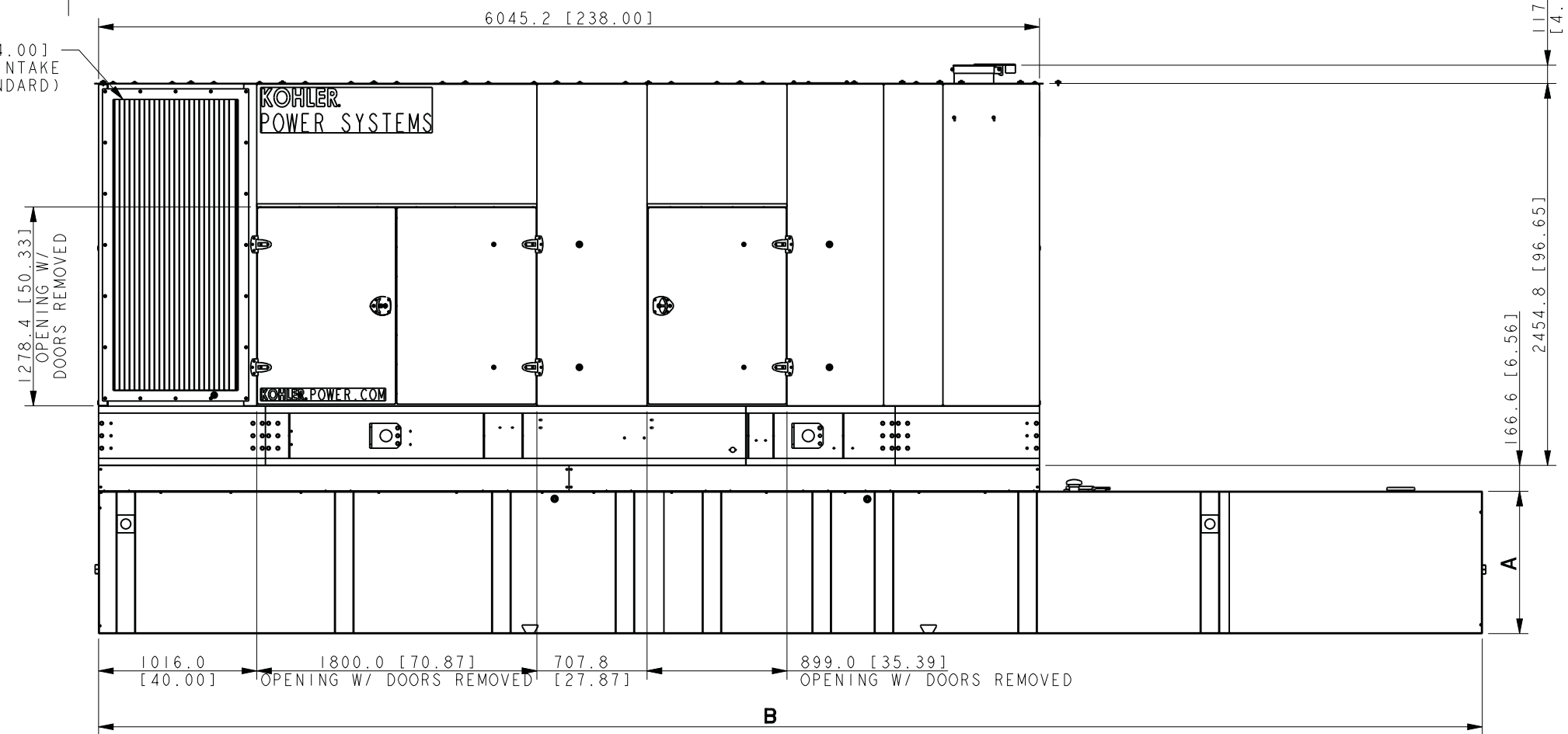
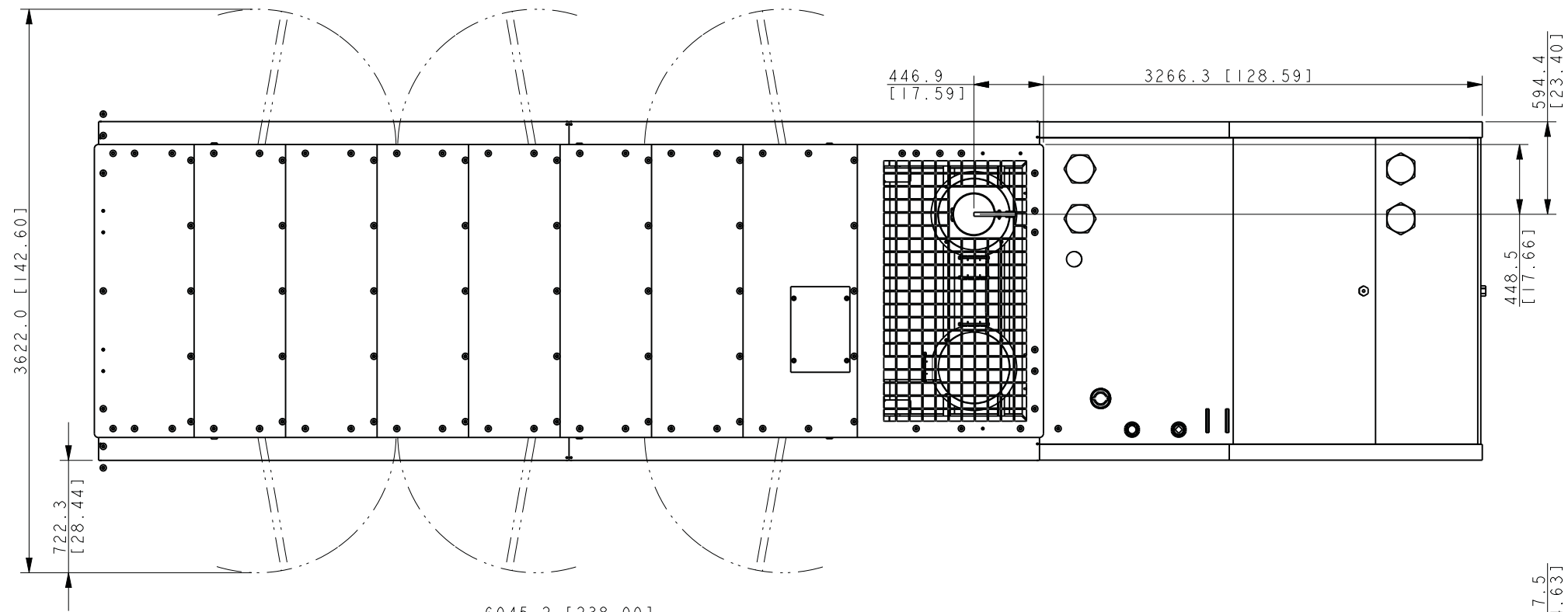


KOHLER CO. METRIC PRO-E
POWER SYSTEMS, KOHLER, WI 53044 U.S.A.
THIS DRAWING IN DESIGN AND DETAIL IS KOHLER CO. PROPERTY AND MUST NOT BE USED EXCEPT IN CONNECTION WITH KOHLER CO. WORK. ALL RIGHTS OF DESIGN OR INVENTION ARE RESERVED.

TITLE
DIMENSION PRINT, 500-600KW ENCLS & TANKS

SCALE 0.05 CAD NO. SHEET 1 of 7
DWG NO. **ADV-8417**

APPROVALS DATE
DRAWN RJS 6-27-11
CHECKED RJS 6-27-11
APPROVED AJD 6-27-11



500-600 REOZVB	KG [LBS]
STEEL SOUND L2 ENCLOSURE WEIGHT	1326 [2923]
ALUM SOUND L2 ENCLOSURE WEIGHT	768 [1694]

REV	DATE	ON COMPOSITE DWGS. SEE PART NO. FOR REVISION LEVEL	BY	UNLESS OTHERWISE SPECIFIED - 1) DIMENSIONS ARE IN MILLIMETERS 2) TOLERANCES ARE:
-	6-27-11	NEW DRAWING [91023-12]	RJS	X.XX ±
A	3-19-12	(A-8) SEE SHEETS 5-6 [CT08748]	DJV	X.X ±
B	1-10-13	SEE SHEET 1 [CT34883]	SDS	ANGLES ±

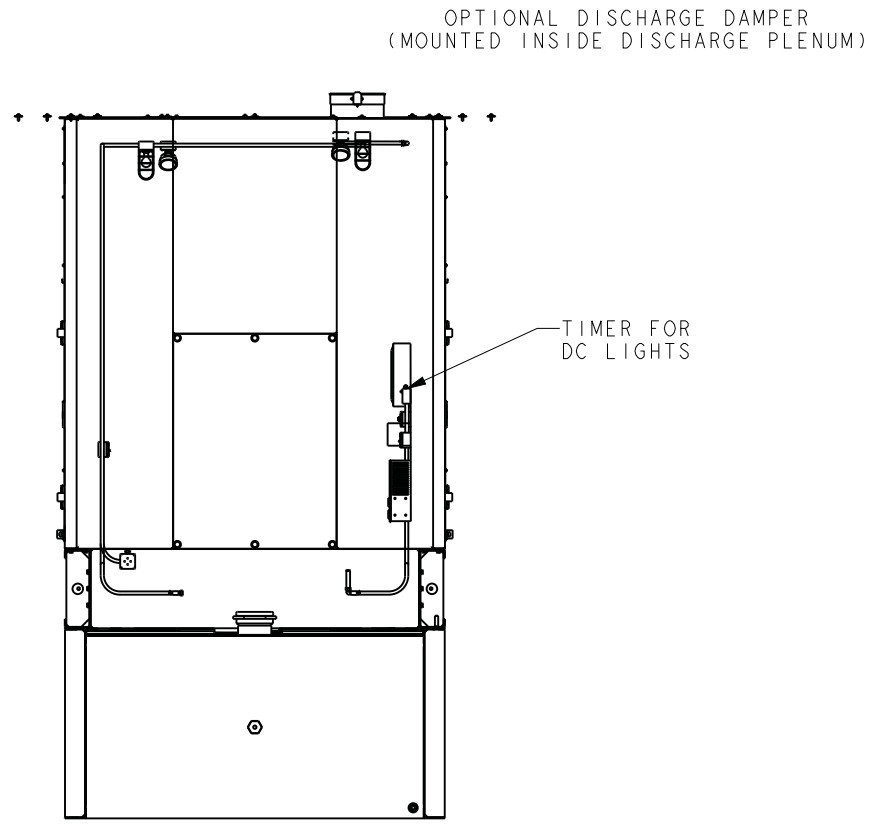
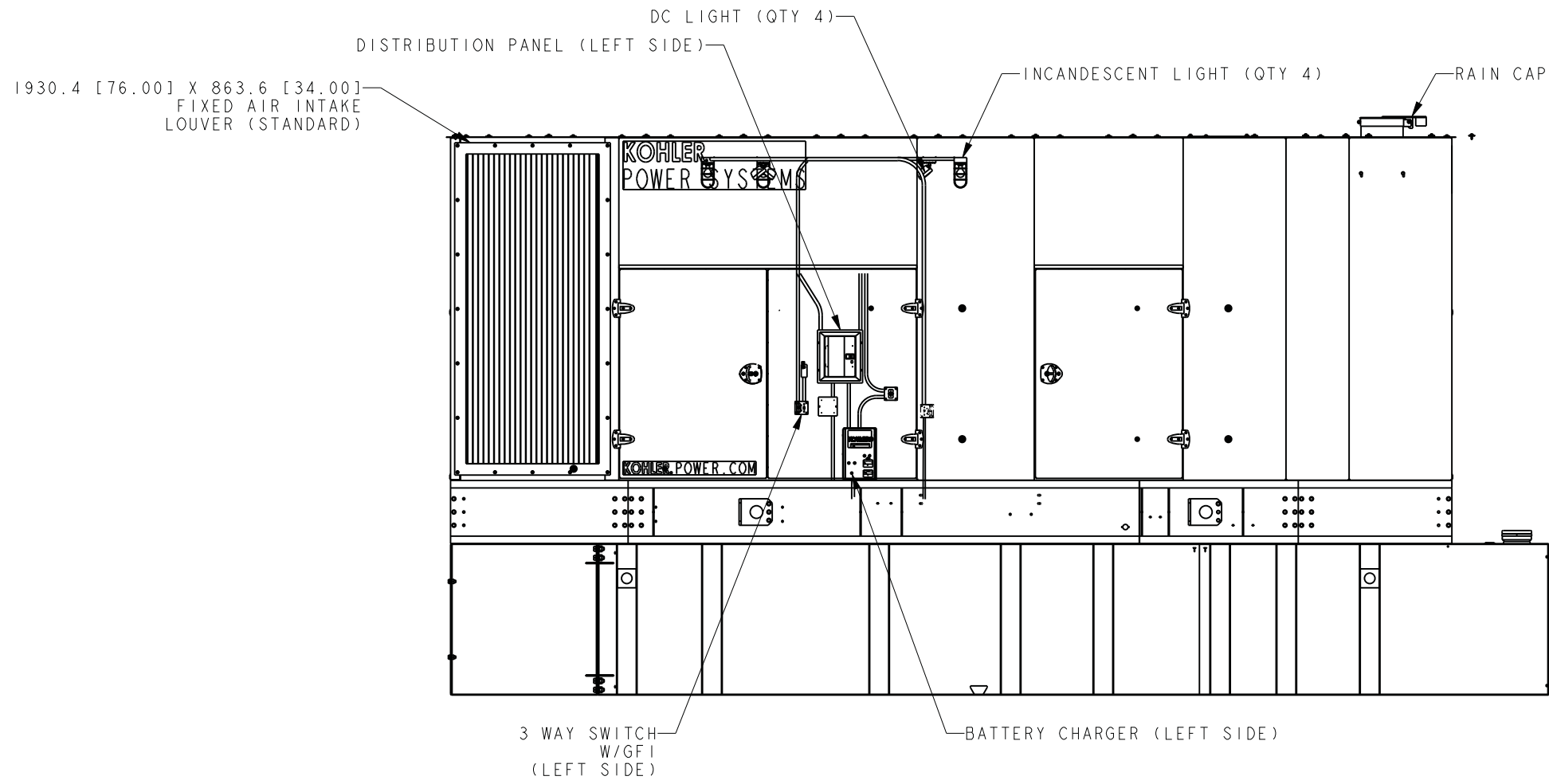
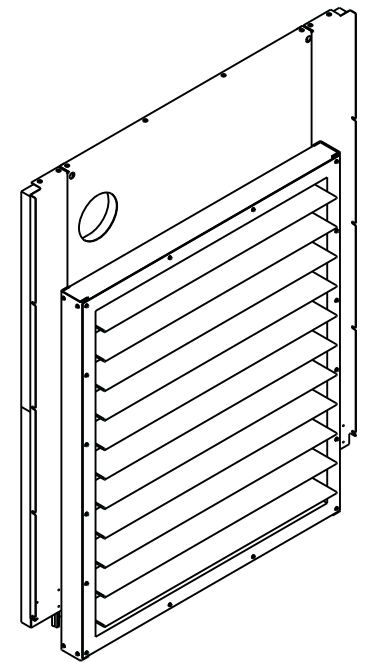
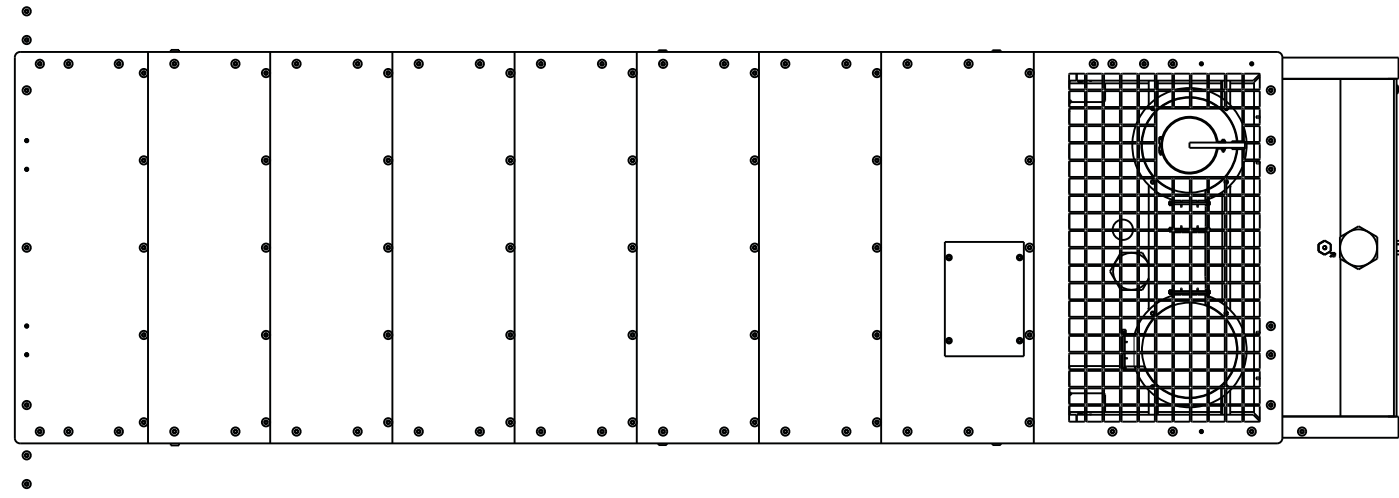
KOHLER CO. METRIC PRO-E
 POWER SYSTEMS, KOHLER, WI 53044 U.S.A.
 THIS DRAWING IN DESIGN AND DETAIL IS KOHLER CO. PROPERTY AND MUST NOT BE USED EXCEPT IN CONNECTION WITH KOHLER CO. WORK. ALL RIGHTS OF DESIGN OR INVENTION ARE RESERVED.

TITLE: **DIMENSION PRINT, 500-600KW ENCLS & TANKS**

SCALE: 0.40 CAD NO. SHEET 2 of 7
 DWG NO. **ADV-8417**

TANK INFORMATION				
LITERS [GALLONS] MIN HOURS	GENSETS	DIM A MM [INCH]	DIM B MM [INCH]	TANK WEIGHT KG [LBS] (NO FUEL)
11554 [3052] 72 HOURS STATE	500-600KW	914.4 [36.0]	8890.0 [350.0]	4205 [9270]

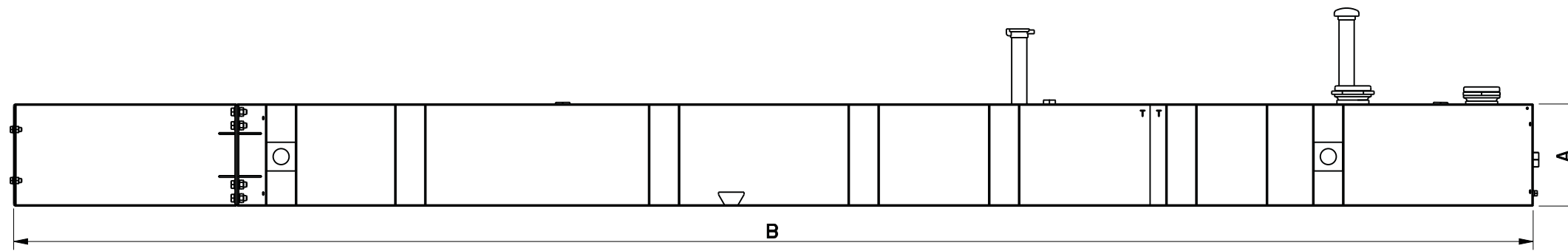
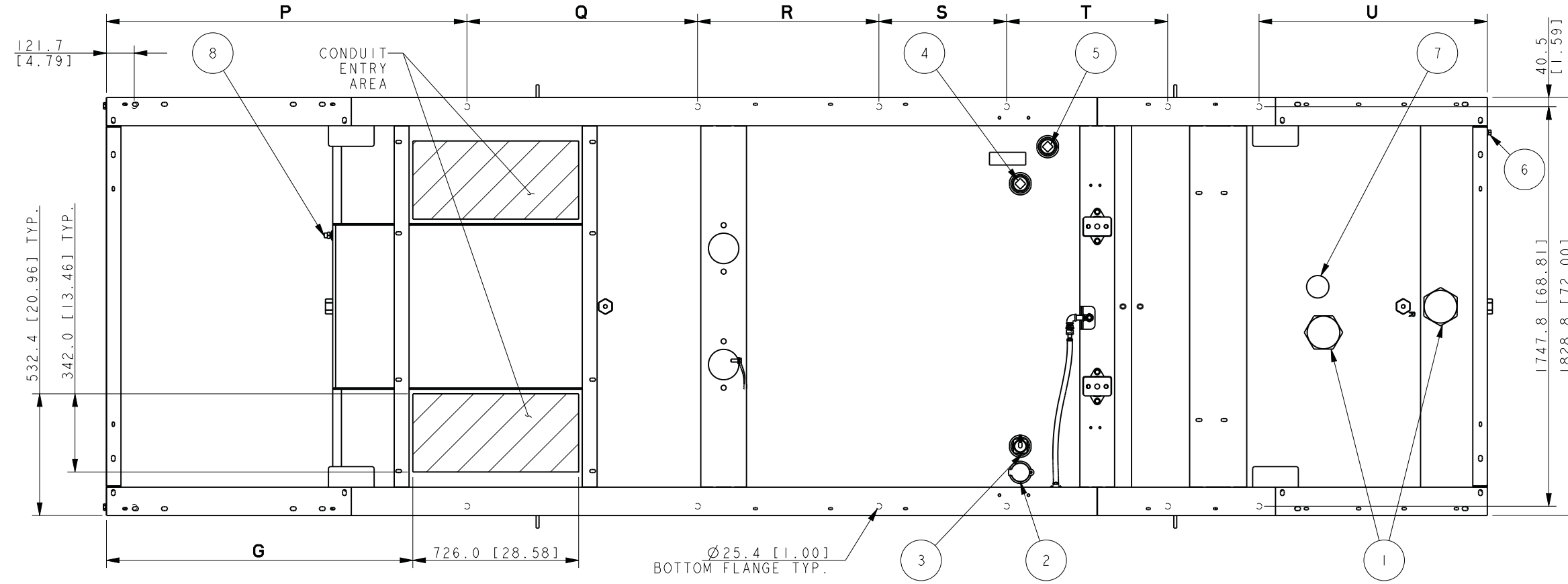
8 7 6 5 4 3 2 1



REV	DATE	ON COMPOSITE DWGS. SEE PART NO. FOR REVISION LEVEL	BY	UNLESS OTHERWISE SPECIFIED - 1) DIMENSIONS ARE IN MILLIMETERS 2) TOLERANCES ARE:	KOHLER CO. METRIC PRO-E POWER SYSTEMS, KOHLER, WI 53044 U.S.A. THIS DRAWING IN DESIGN AND DETAIL IS KOHLER CO. PROPERTY AND MUST NOT BE USED EXCEPT IN CONNECTION WITH KOHLER CO. WORK. ALL RIGHTS OF DESIGN OR INVENTION ARE RESERVED.	
-	6-27-11	NEW DRAWING [91023-12]	RJS	X.XX ±		
A	3-19-12	(A-8) SEE SHEETS 5-6 [CT08748]	DJV	X.X ±	SURFACE FINISH MAX.	
B	1-10-13	SEE SHEET 1 [CT34883]	SDS	ANGLES ±		
				THIRD ANGLE PROJECTION	TITLE	
				APPROVALS	DATE	
				DRAWN	RJS 6-27-11	
				CHECKED	RJS 6-27-11	
				APPROVED	AJD 6-27-11	
					SCALE 0.40 CAD NO.	SHEET 3 of 7
					ADV-8417	D

8 7 6 5 4 3 2 1

STANDARD TANK



2049 L [541 GAL.] 12 HOUR TANK SHOWN.

8	SWITCH, FUEL IN BASIN
7	VENT, NORMAL
6	DRAIN, (1/2" NPT)
5	RETURN, FUEL
4	SUPPLY, FUEL
3	GAUGE, FUEL LEVEL, W/ SENDER
2	FILL CAP, 2" LOCKABLE W/PIPE RISER
1	CAP, EMERGENCY VENT
ITEM	DESCRIPTION

LITERS [GALLONS] MIN HOURS	TANK INFORMATION									JUNCTION BOX			
	A	B	P	Q	R	S	T	U	WEIGHT KG [LBS]	G		500-550 KW	
										500-550 KW	600 KW	5M4024, 5M4027 5M4028, 5M4030 5M4162, 5M4270 5M4272	5M4032 5M4164
2049 [541] 12 HOURS	406.4 [16.0]	6045.2 [238.0]	1578.2 [62.1]	1009.5 [39.7]	794.0 [31.3]	559.0 [22.0]	705.2 [27.8]	999.3 [39.3]	1444 [3183]	1341.3 [52.8]	1176.2 [46.3]	1174.2 [46.2]	1009.1 [39.7]
3910 [1033] 24 HOURS	736.6 [29.0]												
5730 [1513] 36 HOURS	914.4 [36.0]	6629.4 [261.0]	2980.5 [117.3]	2665 [5876]									
7645 [2019] 48 HOURS		8026.4 [316.0]											

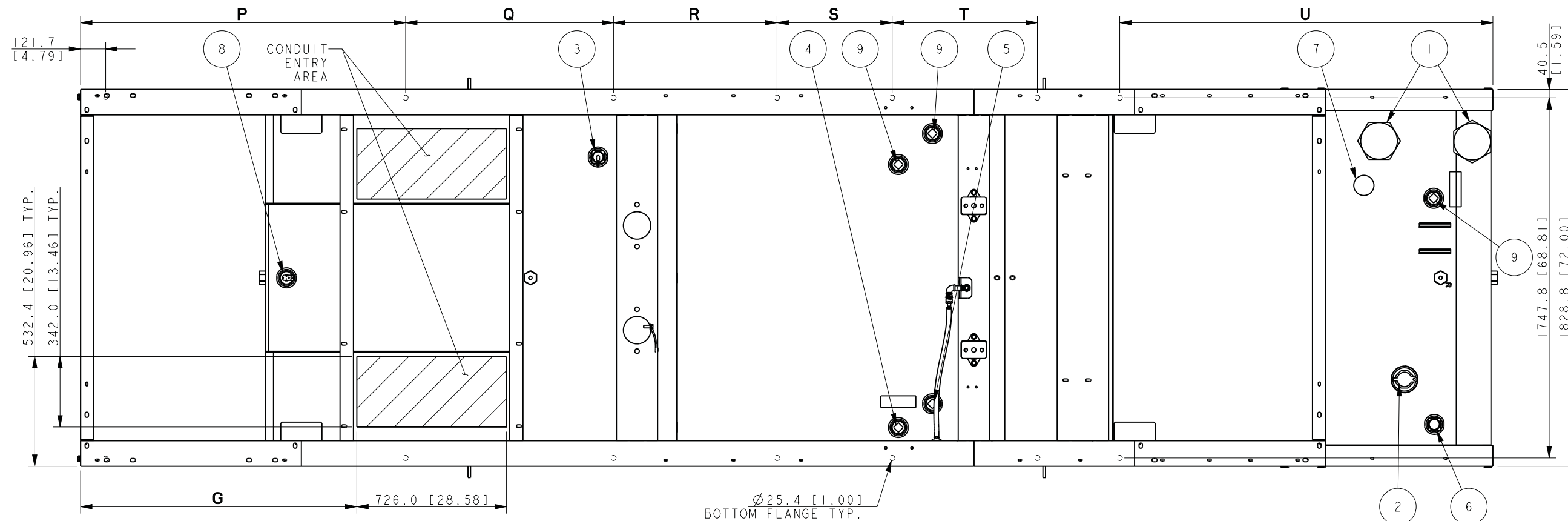
12 - 48 HOUR 500-600KW REOZVB/C
GENSET & STANDARD TANKS WITH
SOUND OR WEATHER ENCLOSURE

REV	DATE	ON COMPOSITE DWGS. SEE PART NO. FOR REVISION LEVEL	BY
-	6-29-11	NEW DRAWING [91023-12]	JB2
A	3-19-12	(A-8) SEE SHEETS 5-6 [CT08748]	DJV
B	1-10-13	SEE SHEET 1 [CT34883]	SDS

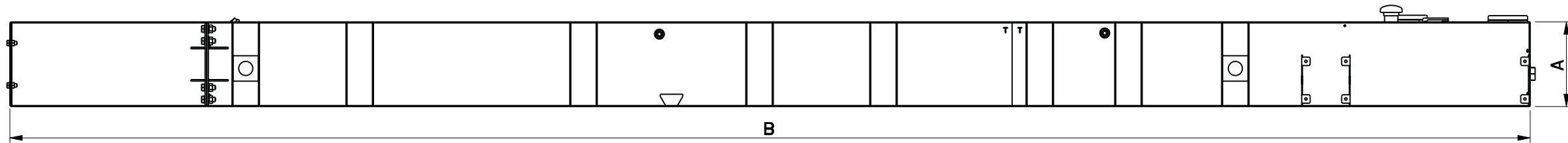
UNLESS OTHERWISE SPECIFIED - 1) DIMENSIONS ARE IN MILLIMETERS 2) TOLERANCES ARE: X.XX ± X.X ± X ± ANGLES ±	THIRD ANGLE PROJECTION	APPROVALS	DATE
SURFACE FINISH MAX.		RJS	6-29-11
DRAWN		RJS	6-29-11
CHECKED		RJS	6-29-11
APPROVED		AJD	6-29-11

KOHLER CO. METRIC PRO-E
POWER SYSTEMS, KOHLER, WI 53044 U.S.A.
THIS DRAWING IN DESIGN AND DETAIL IS KOHLER CO. PROPERTY AND MUST NOT BE USED EXCEPT IN CONNECTION WITH KOHLER CO. WORK. ALL RIGHTS OF DESIGN OR INVENTION ARE RESERVED.

TITLE: **DIMENSION PRINT, 500-600KW ENCLS & TANKS**
SCALE: 0.40 CAD NO. SHEET 4 of 7
DWG NO. **ADV-8417**



Ø25.4 [1.00]
BOTTOM FLANGE TYP.



2039 L [538 GAL.] 12 HOUR TANK SHOWN.

REFER TO SEISMIC ADV FOR IBC/OSHPD SEISMIC MOUNTING LOCATIONS

LITERS [GALLONS] MIN HOURS	TANK INFORMATION								WEIGHT KG [LBS]	JUNCTION BOX					
	A	B	P	Q	R	S	T	U		G		500-550 KW		600 KW	
										5M4024, 5M4027 5M4028, 5M4030 5M4162, 5M4270 5M4272	5M4032 5M4164	5M4030 5M4272	5M4032 5M4164 5M4276		
2039 [538] 12 HOURS	381.0 [15.0]								1591 [3508]						
3930 [1038] 24 HOURS	660.4 [26.0]	6858.0 [270.0]	1578.2 [62.1]	1009.5 [39.7]	794.0 [31.3]	559.0 [22.0]	705.2 [27.8]	1812.1 [71.3]	1893 [4173]	1341.3 [52.8]	1176.2 [46.3]	1174.2 [46.2]	1009.1 [39.7]		
5757 [1520] 36 HOURS	914.4 [36.0]								2177 [4800]						
7658 [2023] 48 HOURS		8458.2 [333.0]						3412.3 [134.3]	2680 [5908]						

12 - 48 HOUR 500-600KW REOZVB/C
GENSET & STATE TANKS WITH
SOUND OR WEATHER ENCLOSURE

ITEM	DESCRIPTION
9	PLUG, PIPE (2" NPT)
8	SWITCH, FUEL IN BASIN TOP MTD, 2"
7	VENT, NORMAL
6	GAUGE, FUEL LEVEL, DIRECT READ
5	RETURN, FUEL
4	SUPPLY, FUEL
3	GAUGE, FUEL LEVEL, W/ SENDER
2	FILL CAP, 2" LOCKABLE W/PIPE RISER
1	CAP, EMERGENCY VENT

REV	DATE	ON COMPOSITE DWGS. SEE PART NO. FOR REVISION LEVEL	BY
-	6-29-11	NEW DRAWING [91023-12]	JB2
A	3-19-12	(A-8) SEISMIC NOTE ADDED [CT08748]	DJV
B	1-10-13	SEE SHEET 1 [CT34883]	SDS

UNLESS OTHERWISE SPECIFIED -
1) DIMENSIONS ARE IN MILLIMETERS
2) TOLERANCES ARE:
X.XX ±
X.X ±
X ANGLES ±

THIRD ANGLE PROJECTION

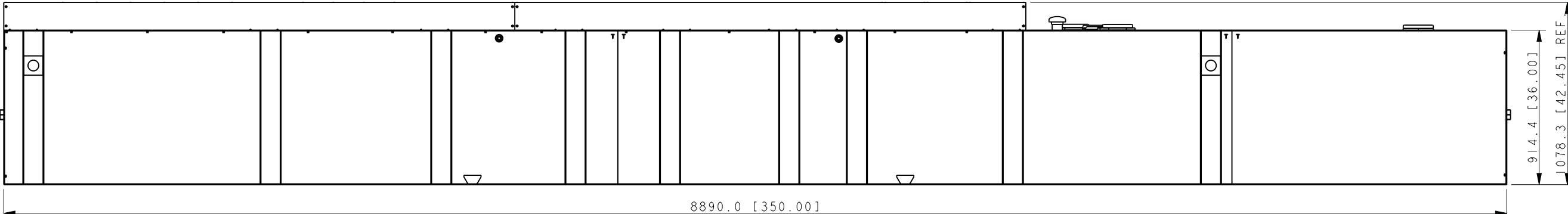
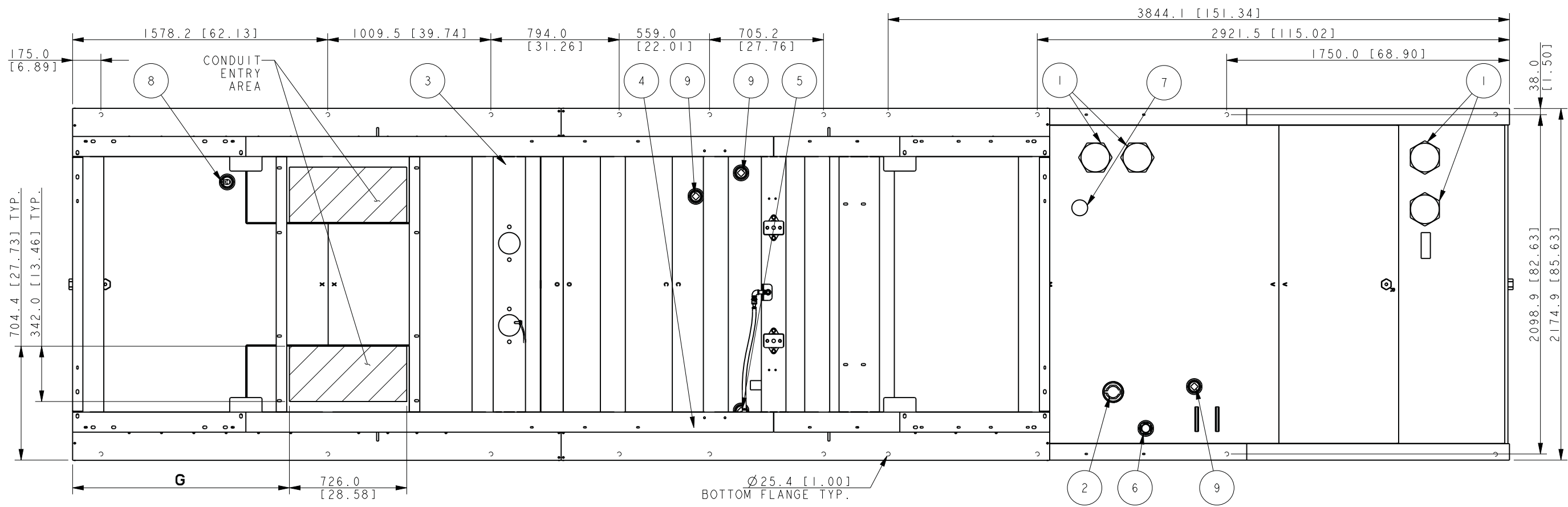
APPROVALS DATE
DRAWN RJS 6-29-11
CHECKED RJS 6-29-11
APPROVED AJD 6-29-11

KOHLER CO. METRIC PRO-E
POWER SYSTEMS, KOHLER, WI 53044 U.S.A.
THIS DRAWING IN DESIGN AND DETAIL IS KOHLER CO. PROPERTY AND MUST NOT BE USED EXCEPT IN CONNECTION WITH KOHLER CO. WORK. ALL RIGHTS OF DESIGN OR INVENTION ARE RESERVED.

TITLE
DIMENSION PRINT, 500-600KW ENCLS & TANKS

SCALE 1.00 CAD NO. SHEET 5 of 7
DWG NO. **ADV-8417**

STATE TANK



11554 L [3052 GAL.] 72 HOUR TANK SHOWN. WEIGHT: 4205 [9270]

REFER TO SEISMIC ADV FOR IBC/OSHPD SEISMIC MOUNTING LOCATIONS

JUNCTION BOX			
G			
500-550 KW		600 KW	
5M4024, 5M4027 5M4028, 5M4030 5M4162, 5M4270 5M4272	5M4032 5M4164	5M4030 5M4272	5M4032 5M4164 5M4272
1341.3 [52.8]	1176.2 [46.3]	1174.2 [46.2]	1009.1 [39.7]

72 HOUR 500-600KW REOZVB/C GENSET & STATE TANK WITH SOUND OR WEATHER ENCLOSURE

ITEM	DESCRIPTION
9	PLUG, PIPE (2" NPT)
8	SWITCH, FUEL IN BASIN TOP MTD, 2"
7	VENT, NORMAL
6	GAUGE, FUEL LEVEL, DIRECT READ
5	RETURN, FUEL
4	SUPPLY, FUEL
3	GAUGE, FUEL LEVEL, W/ SENDER
2	FILL CAP, 2" LOCKABLE W/PIPE RISER
1	CAP, EMERGENCY VENT

REV	DATE	ON COMPOSITE DWGS. SEE PART NO. FOR REVISION LEVEL	BY
-	6-29-11	NEW DRAWING [91023-12]	JB2
A	3-19-12	(A-8) SEISMIC NOTE ADDED [CT08748]	DJV
B	1-10-13	SEE SHEET 1 [CT34883]	SDS

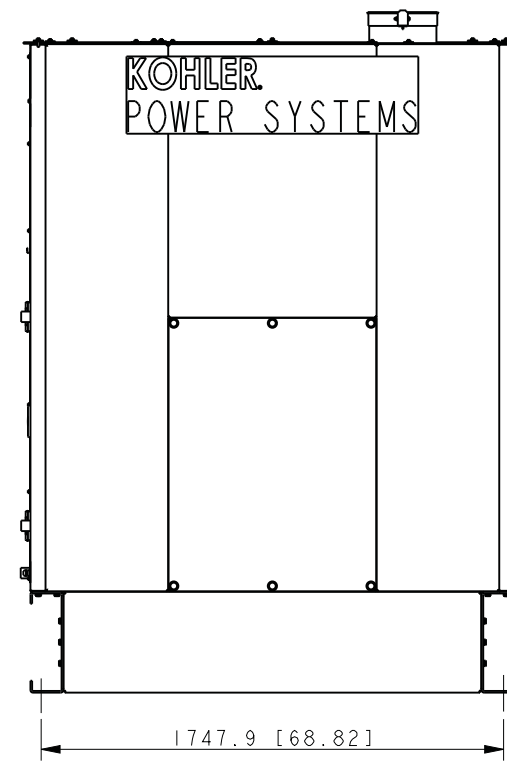
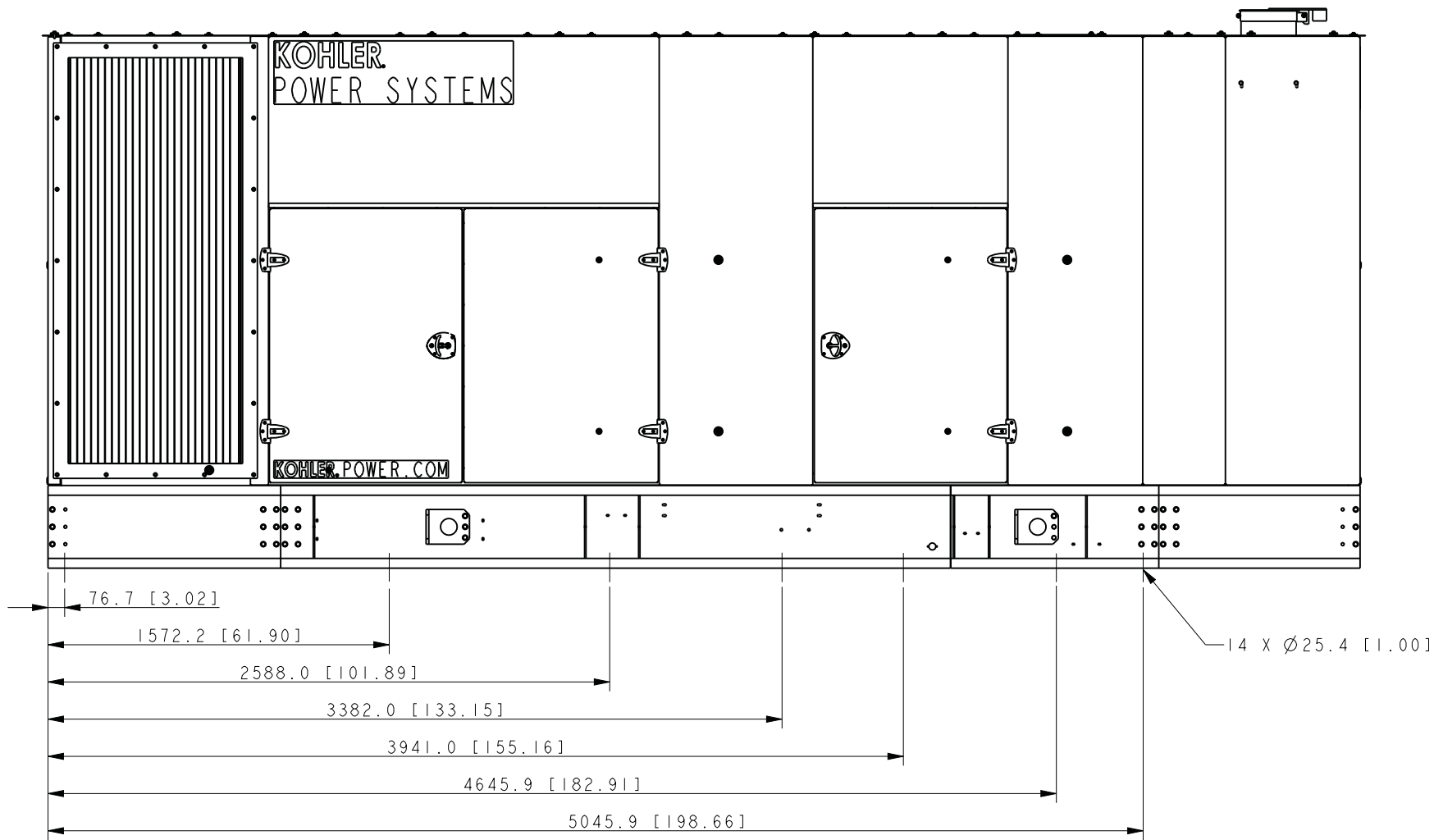
UNLESS OTHERWISE SPECIFIED -
 1) DIMENSIONS ARE IN MILLIMETERS
 2) TOLERANCES ARE:
 X.XX ±
 X.X ±
 ANGLES ±

THIRD ANGLE PROJECTION

APPROVALS: DATE
 DRAWN: RJS 6-29-11
 CHECKED: RJS 6-29-11
 APPROVED: AJD 6-29-11

KOHLER CO. METRIC PRO-E
 POWER SYSTEMS, KOHLER, WI 53044 U.S.A.
 THIS DRAWING IN DESIGN AND DETAIL IS KOHLER CO. PROPERTY AND MUST NOT BE USED EXCEPT IN CONNECTION WITH KOHLER CO. WORK. ALL RIGHTS OF DESIGN OR INVENTION ARE RESERVED.

TITLE: **DIMENSION PRINT, 500-600KW ENCLS & TANKS**
 SCALE: 0.08 CAD NO. SHEET 6 of 7
 DWG NO. **ADV-8417**



NOTES:

FOR PROPER ASSEMBLY METHOD OF HARDWARE,
USE G-585 AS A GUIDELINE.

500-600KW RE0ZVB/C
STEEL/ALUM ENCL & TANKS
SOUND & WEATHER

REV	DATE	ON COMPOSITE DWGS. SEE PART NO. FOR REVISION LEVEL	BY
B	1-10-13	SEE SHEET 1 [CT34883]	SDS

UNLESS OTHERWISE SPECIFIED - 1) DIMENSIONS ARE IN MILLIMETERS 2) TOLERANCES ARE: X.XX ± 0.25 X.X ± 1.0 X ± 1.5 ANGLES ± 0° 30' SURFACE FINISH MAX.	
THIRD ANGLE PROJECTION	
APPROVALS	DATE
DRAWN SDS	1-10-13
CHECKED RJS	1-10-13
APPROVED AJD	1-10-13

KOHLER CO. METRIC PRO-E
POWER SYSTEMS, KOHLER, WI 53044 U.S.A.
THIS DRAWING IN DESIGN AND DETAIL IS KOHLER CO.
PROPERTY AND MUST NOT BE USED EXCEPT IN
CONNECTION WITH KOHLER CO. WORK. ALL RIGHTS OF
DESIGN OR INVENTION ARE RESERVED.

TITLE
DIMENSION PRINT, 500-600KW ENCLS & TANKS

SCALE 0.05 CAD NO. SHEET 7 of 7
DWG NO. **ADV-8417** D