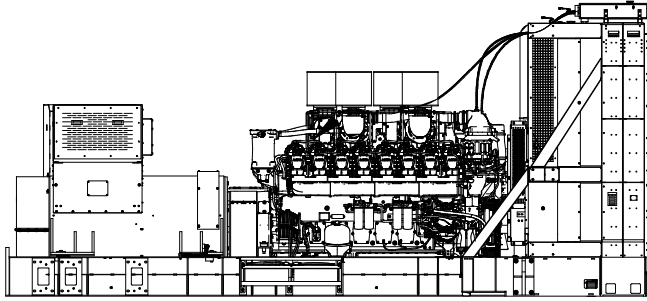




Industrial Diesel Generator Set - KD3000

Emission Optimized -Tier 2 EPA-Certified for Stationary Emergency Applications



Ratings Range

| | | |
|-----------------|------------|--------------|
| | | 60 Hz |
| Standby: | kW | 2800-3000 |
| | kVA | 3500-3750 |
| Prime: | kW | 2720 |
| | kVA | 3400 |



Standard Features

- Rehiko provides one-source responsibility for the generating system and accessories.
- Approved for use with certified renewable Hydrotreated Vegetable Oil (HVO) / Renewable Diesel (RD) fuels compliant with EN15940 / ASTM D975.
- The generator set and its components are prototype-tested, factory-built, and production-tested.
- cULus listing (UL 2200 and CSA C22.2 No. 100).
- The generator set accepts rated load in one step.
- A standard three-year unlimited-hour limited warranty for standby applications in the U.S. And Canada. Five-year basic, five-year comprehensive, and ten-year extended limited warranties are also available for purchase in some jurisdictions.
- A standard two-year or 8700-hour limited warranty for prime power applications.
- Other features:
 - Rehiko designed controllers for one-source system integration and remote communication. See Controllers on page 4.

Conscious Care™ Qualified

- Reduce operating costs, fuel consumption, and greenhouse gas emissions with Conscious Care™ maintenance program.

General Specifications

| | |
|--|---|
| Manufacturer | Rehiko |
| Engine: model | KD83V16A |
| Alternator Choices | KH06671TO4D KH07634TO4D KH07635TO4D KH08431TO4D KH08590TO4D |
| Performance Class | Per ISO 8528-5 |
| One Step Load Acceptance | 100% |
| Voltage | Wye, 480 V, 600 V, 4160 V, or 12470-13800 V |
| Controller | APM603, APM802 |
| Fuel Tank Capacity, L (gal.) | — |
| Fuel Consumption, L/hr (gal./hr) 100% at Standby | 801.8 (211.9) |
| Fuel Consumption, L/hr (gal./hr) 100% at Prime Power | 742.6 (196.3) |
| Emission Level Compliance (KDxxxx) | Tier 2 |
| Open Unit Noise Level @ 7 m dB(A) at Rated Load | — |
| Data Center Continuous (DCC) Rating (Refer to TIB-101 for definitions) | Same as the Standby Rating below |

Generator Set Ratings

| Alternator | Voltage | Ph | Hz | 130°C Rise Standby Rating | | | 105°C Rise Standby Rating | | | 105°C Rise Prime Rating | | |
|-------------|------------|----|----|---------------------------|------|------|---------------------------|------|------|-------------------------|------|------|
| | | | | kW | kVA | Amps | kW | kVA | Amps | kW | kVA | Amps |
| KH06671TO4D | 7200/12470 | 3 | 60 | 3000 | 3750 | 174 | 2800 | 3500 | 163 | 2720 | 3400 | 158 |
| | 2400/4160 | 3 | 60 | 3000 | 3750 | 521 | 3000 | 3750 | 521 | 2720 | 3400 | 472 |
| KH07634TO4D | 7620/13200 | 3 | 60 | 3000 | 3750 | 165 | 3000 | 3750 | 165 | 2720 | 3400 | 149 |
| | 7970/13800 | 3 | 60 | 3000 | 3750 | 157 | 3000 | 3750 | 157 | 2720 | 3400 | 143 |
| KH07635TO4D | 7200/12470 | 3 | 60 | 3000 | 3750 | 174 | 3000 | 3750 | 174 | 2720 | 3400 | 158 |
| | 277/480 | 3 | 60 | 3000 | 3750 | 4511 | 2800 | 3500 | 4210 | 2720 | 3400 | 4090 |
| KH08431TO4D | 347/600 | 3 | 60 | 3000 | 3750 | 3609 | 2800 | 3500 | 3368 | 2720 | 3400 | 3272 |
| | 2400/4160 | 3 | 60 | 3000 | 3750 | 521 | 2800 | 3500 | 486 | 2720 | 3400 | 472 |
| KH08590TO4D | 277/480 | 3 | 60 | 3000 | 3750 | 4511 | 3000 | 3750 | 4511 | 2720 | 3400 | 4090 |
| | 347/600 | 3 | 60 | 3000 | 3750 | 3609 | 3000 | 3750 | 3609 | 2720 | 3400 | 3272 |

RATINGS: All three-phase units are rated at 0.8 power factor. *Standby Ratings:* The standby rating is applicable to varying loads for the duration of a power outage. There is no overload capability for this rating. *Prime Power Ratings:* At varying load, the number of generator set operating hours is unlimited. A 10% overload capacity is available for one hour in twelve. Ratings are in accordance with ISO-8528-1 and ISO-3046-1. For limited running time and continuous ratings, consult the factory. Obtain technical information bulletin (TIB-101) for ratings guidelines, complete ratings definitions, and site condition derates. The generator set manufacturer reserves the right to change the design or specifications without notice and without any obligation or liability whatsoever.



Industrial Diesel Generator Set - KD3000

*Emission Optimized -Tier 2 EPA-Certified for Stationary
Emergency Applications*

| Engine Specifications | 60 Hz |
|--|---------------------------------------|
| Engine model | KD83V16A |
| Engine type | 4-Cycle, Turbocharged, Intercooled |
| Cylinder arrangement | 16-V |
| Displacement, L (cu. in.) | 83 (5048) |
| Bore and stroke, mm (in.) | 175 x 215 (6.89 x 8.46) |
| Compression ratio | 16.0:1 |
| Rated rpm | 1800 |
| Max. power at rated rpm, kWm (BHP) | 3230 (4332) |
| Governor: type, make/model | KODEC Electronic Control |
| Frequency regulation, no-load to full-load | Isochronous |
| Frequency regulation, steady state | ±0.25% |
| Frequency | Fixed |

| Lubricating System | 60 Hz |
|--|---------------|
| Type | Full Pressure |
| Oil pan capacity with filter (initial fill), L (qt.) § | 467 (494) |
| Oil filter: quantity, type § | 8, Cartridge |
| Oil cooler | Water-Cooled |
| § Rehiko recommends the use of Rehiko Genuine oil and filters. | |

| Fuel System | 60 Hz |
|-----------------------------------|---|
| Max. fuel flow, Lph (gph) | 1170 (309) |
| Maximum diesel fuel lift, m (ft.) | 3.5 (11.5) |
| Fuel filter: quantity, type | 3, Primary Engine Filter 2, Fuel/Water Separator |
| Recommended fuel | #2 Diesel ULSD/HVO/RD |

| Fuel Consumption* | 60 Hz |
|--|---------------|
| At % load of Engine power rating (Standby) | lph (gph) |
| 100% | 801.8 (211.9) |
| 75% | 687.0 (181.5) |
| 50% | 456.0 (120.5) |
| 25% | 254.8 (67.3) |

| At % load of Engine power rating (Prime) | lph (gph) |
|--|---------------|
| 100% | 742.6 (196.3) |
| 75% | 595.8 (157.5) |
| 50% | 409.3 (108.2) |
| 25% | 234.9 (62.1) |

* Assumed volumetric fuel consumption with diesel fuel having an LHV of 42.7 kJ/kg and weighing 0.85 kg/l.

| Radiator System | 60 Hz EPA Tier 2 | 60 Hz Low NOx EPA Tier 2 |
|--|---------------------|--------------------------------|
| Ambient temperature, °C (°F) † | 50 (122) | |
| Engine Jacket water capacity, L (gal) | 317 (84) | |
| Engine Jacket water capacity, L (gal), HT | 237 (63) | |
| Charge cooler water capacity, engine only, LT | 80 (21) | |
| Radiator system capacity, including engine, L (gal) | 1060 (280) | |
| Jacket water capacity, Total: radiator + engine, HT. L (gal) | 697 (184) | |
| Charge cooler water capacity, Total: radiator + engine, LT L (gal) | 363 (96) | |
| Heat rejected to cooling water at rated kW, dry exhaust, kW (Btu/min.) | 1004 (57096) | 1060 (60280) |
| Engine jacket water flow, Lpm (gpm) | 2550 (674) | |
| Heat rejected to charge cooling water at rated kW, dry exhaust, kW (Btu/min.) | 950 (54026) | 980 (55730) |
| Charge cooler water flow, Lpm (gpm) | 820 (217) | |
| Fan diameter, including blades, mm (in.) | 2438 (96) | |
| Fan, kWm (HP) | 107 (143) | |
| Max. restriction of cooling air, intake and discharge side of radiator, kPa (in. H ₂ O) | 0.125 (0.5) | |
| † Enclosure with enclosed silencer reduces ambient temperature capability by 5°C (9°F). | | |

| Remote Radiator System | 60 Hz |
|--|-----------------------|
| Exhaust manifold type | Dry |
| Connection sizes: | Class 150 ANSI Flange |
| Water inlet/outlet, mm (in.) | 216 (8.5) Bolt Circle |
| Intercooler inlet/outlet, mm (in.) | 178 (7.0) Bolt Circle |
| Static head allowable above engine, kPa (ft. H ₂ O) | 250 (83.6) |



Industrial Diesel Generator Set - KD3000

*Emission Optimized -Tier 2 EPA-Certified for Stationary
Emergency Applications*

| Exhaust System | 60 Hz |
|--|-----------------|
| Heat rejected to exhaust, kW | 2700 |
| Exhaust flow at rated kW, m ³ /min. (cfm) | 687 (24248) |
| Exhaust temperature at rated kW at 25°C (77°F) ambient, dry exhaust, °C (°F) | 474 (885) |
| Maximum allowable back pressure, kPa (in. Hg) | 8.5 (2.5) |
| Exh. outlet size at eng. hookup, mm (in.) | See ADV drawing |

| Electrical System | 60 Hz |
|--|--|
| Battery charging alternator: | |
| Ground (negative/positive) | Negative |
| Volts (DC) | 24 |
| Ampere rating | 140 |
| Starter motor qty. at starter motor power rating, rated voltage (DC) | Standard: 2 @ 9 kW, 24; Redundant (optional): 4 @ 9 kW, 24 |
| Battery, recommended cold cranking amps (CCA): | |
| Quantity, CCA rating each, type (with standard starters) | 4, 1110, AGM |
| Quantity, CCA rating each, type (with redundant starters) | 8, 1110, AGM |
| Battery voltage (DC) | 12 |

| Air Requirements | 60 Hz |
|---|-----------------------|
| Radiator-cooled cooling air, m ³ /min. (scfm) | 50°C 4240 (149700) |
| Cooling air required for generator set when equipped with city water cooling or remote radiator, based on 14°C (25°F) rise, m ³ /min. (scfm) | 1190 (42042) |
| Combustion air, m ³ /min. (cfm) | 261 (9218) |
| Max. air combustion restriction, kPa (in. H ₂ O) | 5.0 (20) |
| Heat rejected to ambient air: | |
| Engine, kW (Btu/min.) | 160 (9099) |
| Alternator, kW (Btu/min.) | 175 (9952) |

|| Air density = 1.20 kg/m³ (0.075 lbf/ft³)

| Alternator Specifications | 60 Hz |
|--|---|
| Type | 4-Pole, Rotating-Field |
| Exciter type | Brushless, Permanent-Magnet Pilot Exciter |
| Voltage regulator | Solid-State, Volts/Hz |
| Insulation system | Class H, Synthetic, Non-hygroscopic |
| Ingress Protection rating | IP23 |
| Bearing: quantity, type | 2, Sealed |
| Coupling type | Coupling |
| Overspeed (rpm) | 2250 |
| Voltage regulation, no-load to full-load | ±0.25% |
| Unbalanced load capability | 100% of Rated Standby Current |

Alternator Standard Features

- The pilot-excited, permanent magnet (PM) alternator provides superior short-circuit capability.
- All models are brushless, rotating-field alternators.
- NEMA MG1, IEEE, and ANSI standards compliance for temperature rise and motor starting.
- Sustained short-circuit current of up to 300% of the rated current for up to 10 seconds.
- Sustained short-circuit current enabling downstream circuit breakers to trip without collapsing the alternator field.
- Self-ventilated and dripproof construction.
- Superior voltage waveform from two-thirds pitch windings and skewed stator.
- Brushless alternator with brushless pilot exciter for excellent load response.

NOTE:

See TIB-102 Alternator Data Sheets for alternator application data and ratings, efficiency curves, voltage dip with motor starting curves, and short circuit decrement curves.

Controllers



APM802 Controller

Provides advanced control, system monitoring, and system diagnostics for optimum performance and compatibility.

- 12-inch graphic display with touch screen and menu control provide easy local data access
- Measurements are selectable in metric or English units
- User language is selectable
- Two USB ports allow connection of a flash drive, mouse, or keypad
- Electrical data, mechanical data, and system settings can be saved to a flash drive
- Ethernet port allows connection to a PC type computer or Ethernet switch
- The controller supports Modbus® RTU and TCP protocols
- NFPA 110 Level 1 capability

Refer to G6-152 for additional controller features and accessories.

Modbus® is a registered trademark of Schneider Electric.



APM603 Controller

Provides advanced control, system monitoring, and system diagnostics for optimum performance and compatibility.

- 7-inch graphic display with touch screen and menu control provides easy local data access
- Measurements are selectable in metric or English units
- Paralleling capability to control up to 8 generators on an isolated bus with first-on logic, synchronizer, kW and kVAR load sharing, and protective relays
- **Note:** Parallel with other APM603 controllers only
- Generator management to turn paralleled generators off and on as required by load demand
- Load management to connect and disconnect loads as required
- Controller supports Modbus® RTU, Modbus® TCP, SNMP and BACnet®
- Integrated voltage regulator with $\pm 0.25\%$ regulation
- Built-in alternator thermal overload protection
- UL-listed overcurrent protective device
- NFPA 110 Level 1 capability

Refer to G6-162 for additional controller features and accessories.

BACnet® is a registered trademark of ASHRAE.

Codes and Standards

- Engine-generator set is designed and manufactured in facilities certified to ISO 9001.
- Generator set meets NEMA MG1, BS5000, ISO, DIN EN, and IEC standards, NFPA 110.
- Engine generator set is tested to ISO 8528-5 for transient response.
- The generator set and its components are prototype-tested, factory-built, and production-tested.

Third-Party Compliance

- Tier 2 EPA-Certified for Stationary Emergency Applications

Available Approvals and Listings

- California OSHPD Pre-Approval
- cULus (UL 2200 and CSA C22.2 No. 100)
- IBC Seismic Certification
- Canadian cUL Tank Listing

Warranty Information

- A standard three-year unlimited-hour limited warranty for standby applications in the U.S. And Canada. Five-year basic, five-year comprehensive, and ten-year extended limited warranties are also available for purchase in some jurisdictions.
- A standard two-year or 8700-hour limited warranty for prime power applications.

Available Warranties for Standby Applications

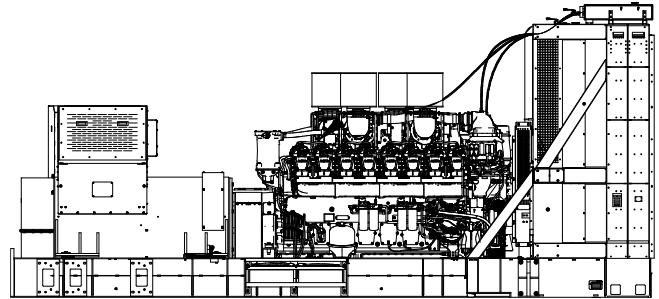
- 5-Year Basic Limited Warranty
- 5-Year Comprehensive Limited Warranty
- 10-Year Major Components Limited Warranty

Standard Features

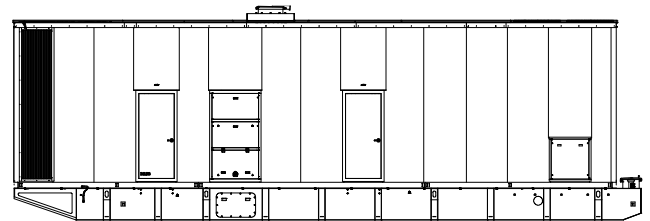
- Coolant in generator
- Charging alternator 24Vdc
- Closed Crankcase Ventilation (CCV) filters
- Compensators and flanges for exhaust outlets
- Delivered with initial oil fill
- Dual bearing alternator IP23, T^orise / Insulation class H/H
- Fuel/Water separator
- Generator heater
- Industrial water cooled internal combustion engine
- Local emergency stop switch
- Oil drain and coolant drain extension
- Operation and installation literature
- Packaging under plastic film
- Prelube oil pump
- Standard and heavy duty air filter
- Standard and redundant fuel/water separator
- Single and redundant starter
- Spring isolation under the skid
- Welded steel skid

Dimensions and Weights

| Compact version without cooling | 60 Hz |
|--|---|
| Overall Size, L x W x H, max., mm (in.): | 7546 x 3182 x 3456 (297.0 x 125.3 x 136.1) |
| Weight (radiator model), wet, max., kg (lb.): | 29212 (64401) |
| Fuel tank capacity, L (gal.) | 0 |



| Sound Level 2 Walk-In Enclosure | 60 Hz |
|---|--|
| Aluminum frame enclosure with Internal silencer, acoustic-lined air inlet, vertical outlet hood with 90° angles to redirect air and reduce noise. | |
| Overall Size, L x W x H, max., mm (in.): | 16166 x 4157 x 5755 (636.5 x 163.6 x 226.6) |
| Max. weight, kg (lb.) | 53457 (117852) |
| Fuel tank capacity, L (gal.) | Refer to G6-190. |
| Sound Pressure Level at 60 Hz with full load, dB | 74 |





Industrial Diesel Generator Set - KD3000

*Emission Optimized -Tier 2 EPA-Certified for Stationary
Emergency Applications*