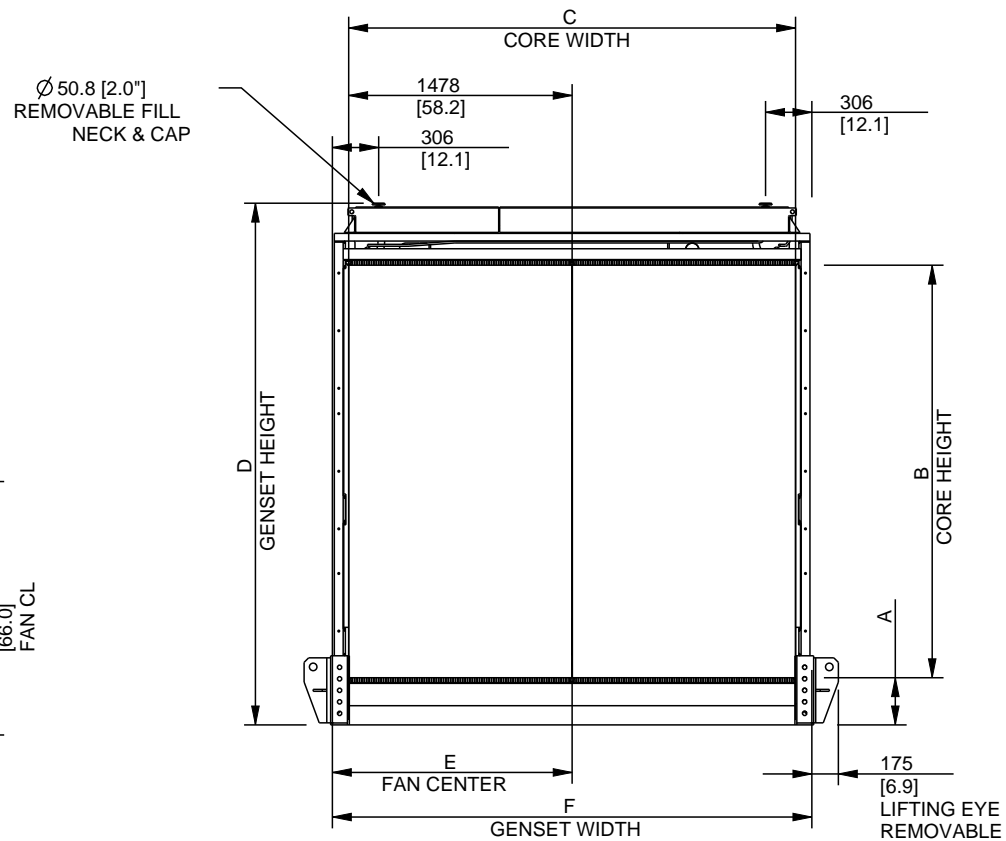


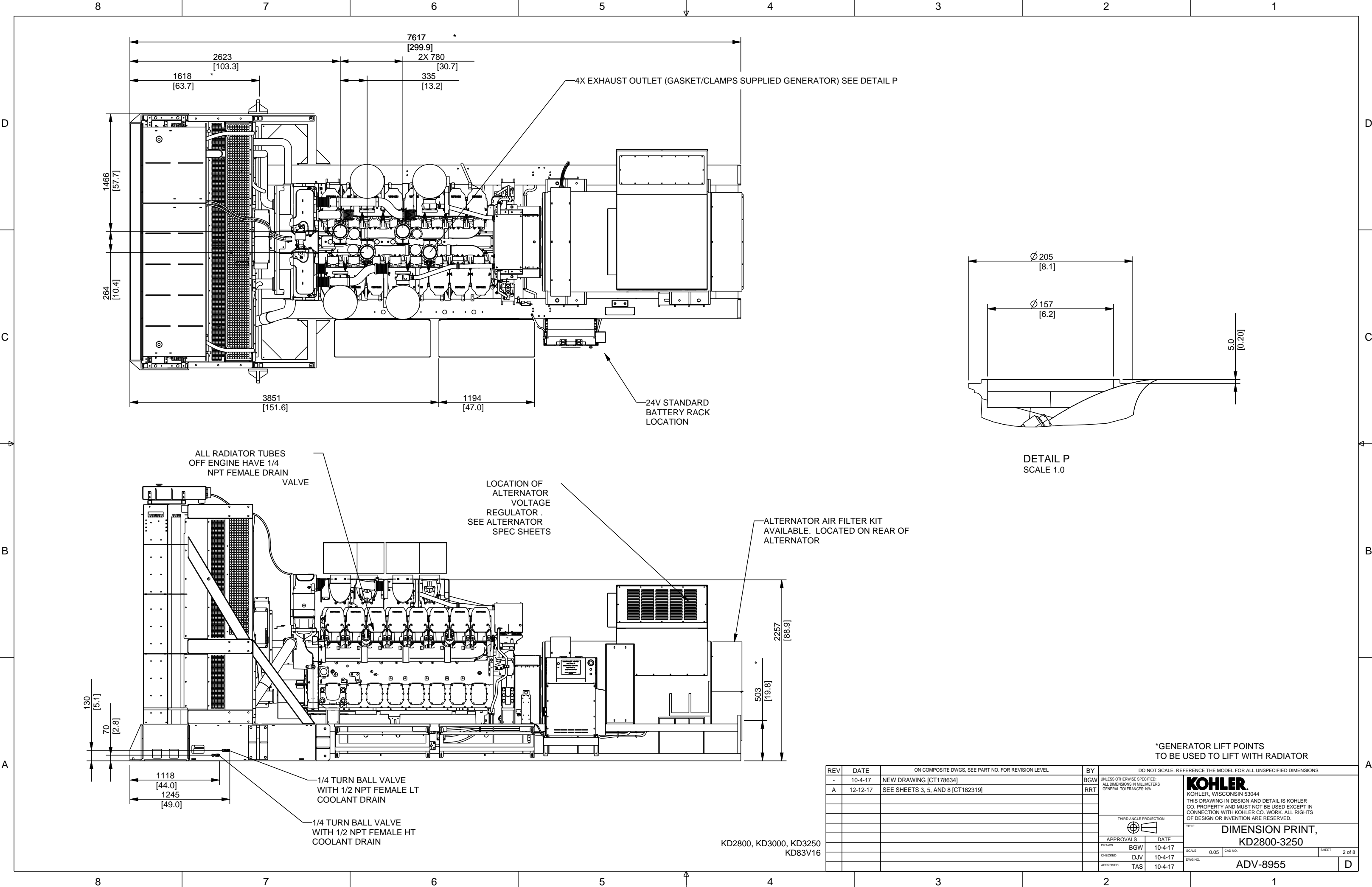
4		3		2		1	
MODEL	ALTERNATOR	GENSET MAXIMUM WEIGHT (WET) KG [LB]	HORIZONTAL CG (WET) MM [IN]	VERTICAL CG (WET) MM [IN]	GENSET LENGTH MM [IN]		
2800	KH07770TO4D	27187 [59960]	3437 [135.3]	923 [36.4]	7330 [288.6]		
2800	KH09270TO4D	30014 [66195]	3730 [146.9]	836 [32.9]	7648 [301.1]		
2800, 3000	KH08430TO4D	27458 [60558]	3465 [136.4]	984 [38.7]	7330 [288.6]		
2800, 3000	KH06670TO4D	30249 [66713]	3754 [147.8]	830 [32.7]	7648 [301.1]		
2800, 3000, 3250	KH07631TO4D	31126 [68647]	3844 [151.3]	807 [31.8]	7648 [301.1]		
2800, 3000, 3250	KH07632TO4D	31819 [70177]	3896 [153.4]	789 [31.1]	7648 [301.1]		
2800, 3000, 3250	KH09370TO4D	32513 [71707]	3956 [155.7]	1073 [42.3]	7648 [301.1]		

RADIATOR DIMENSIONS						
MODEL	A	B	C	D	E	F
KD2800, KD3000, KD3250 60HZ, EPA TIER 2	312.0 [12.28]	2728.7 [107.43]	2955.8 [116.37]	3451.0 [135.8]	1585.7 [62.43]	3171.5 [124.86]
KD2800-F, KD3000-F, KD3250-F 60HZ, FUEL OPT. PRIME	312.0 [12.28]	2728.7 [107.43]	2955.8 [116.37]	3451.0 [135.8]	1585.7 [62.43]	3171.5 [124.86]
KD2800-F, KD3000-F, KD3250-F 60HZ, FUEL OPT. STANDBY	312.0 [12.28]	2728.7 [107.43]	2955.8 [116.37]	3451.0 [135.8]	1585.7 [62.43]	3171.5 [124.86]
KD2800-YF, KD3000-YF, KD3250-YF 50HZ, FUEL OPT. STANDBY	312.0 [12.28]	2728.7 [107.43]	2955.8 [116.37]	3451.0 [135.8]	1585.7 [62.43]	3171.5 [124.86]
KD2800-YF, KD3000-YF, KD3250-YF 50HZ, FUEL OPT. PRIME	312.0 [12.28]	2728.7 [107.43]	2955.8 [116.37]	3451.0 [135.8]	1585.7 [62.43]	3171.5 [124.86]




- NOTES:
- 1) DIMENSIONS IN [] ARE ENGLISH EQUIVALENTS.
 - 2) IF IBC OR OSHPD CERTIFICATION IS REQUIRED SEE SEISMIC ADV FOR INSTALLATION INSTRUCTIONS.
 - 3) DUCT FLANGE STANDARD WITH RADIATOR

[illegible]

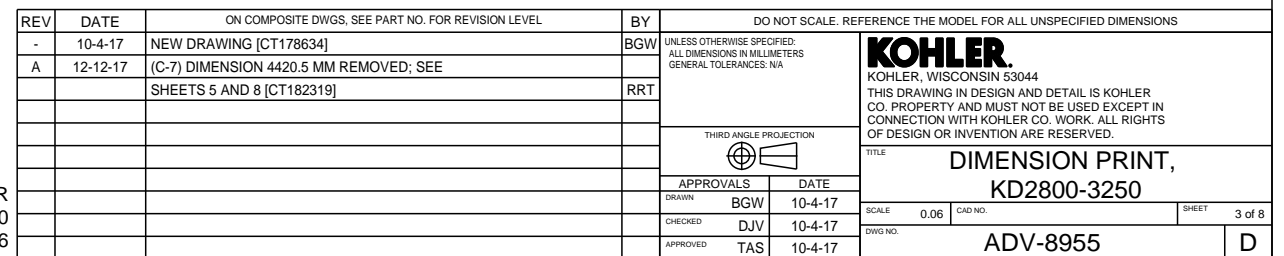


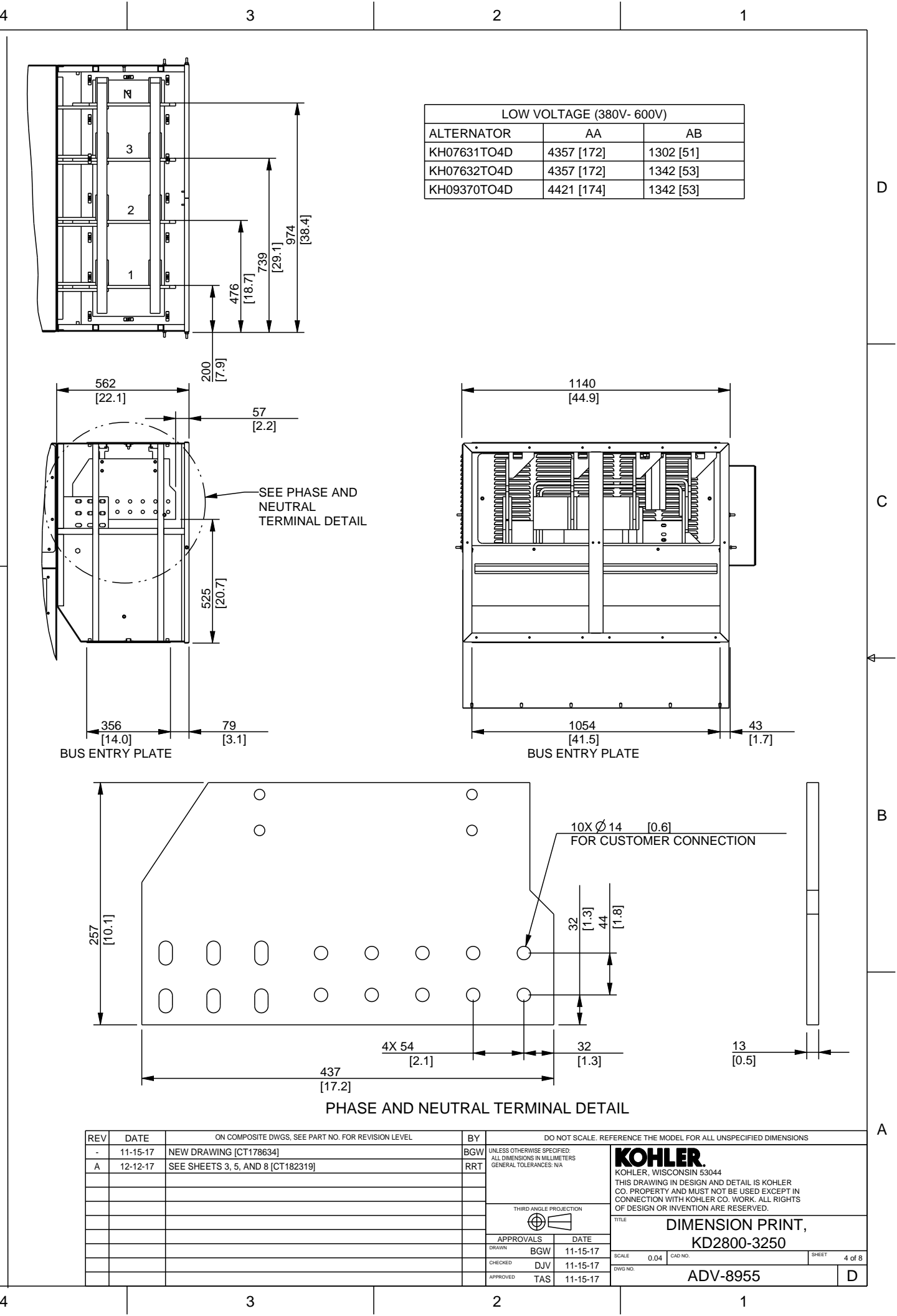
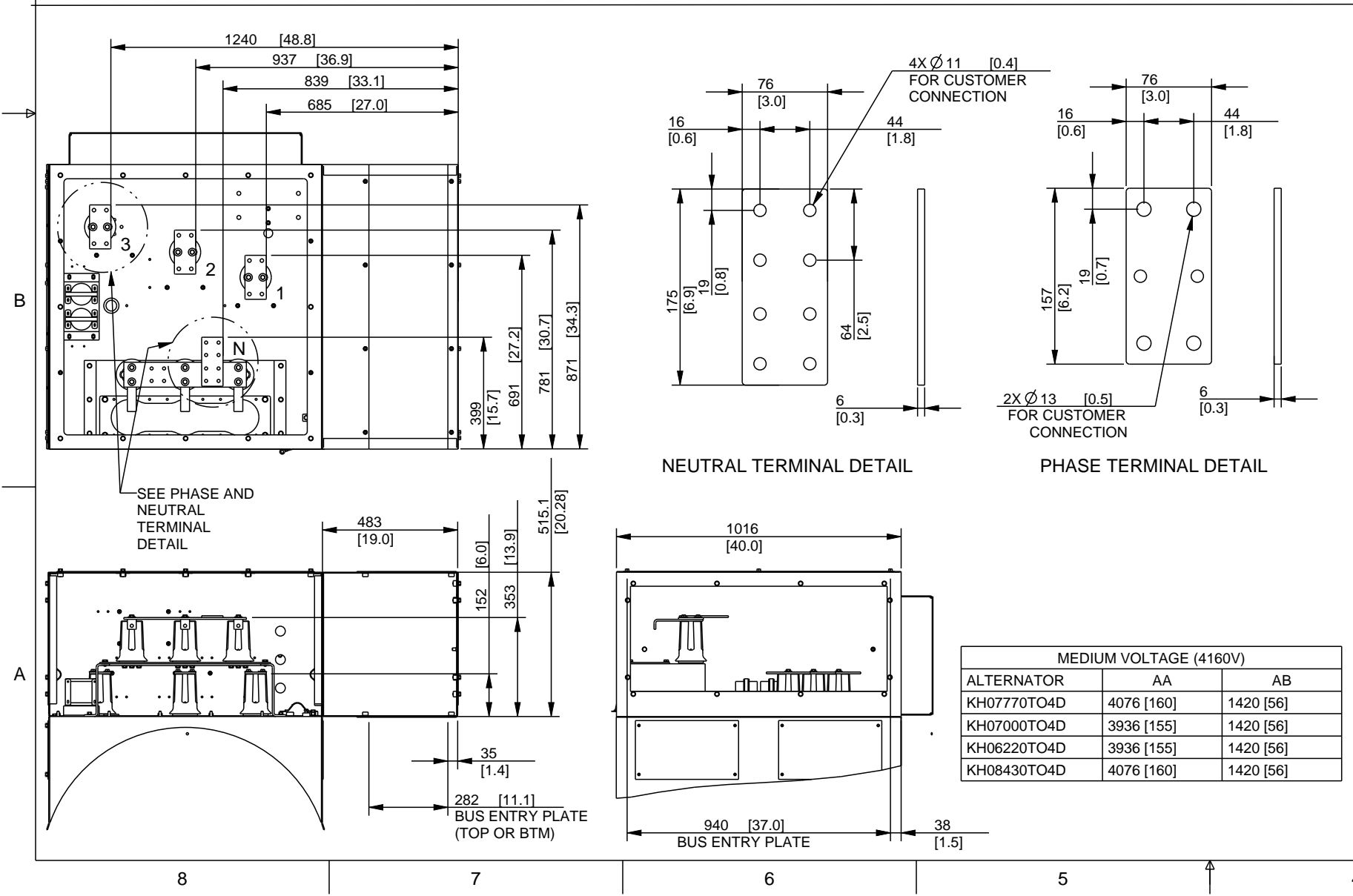
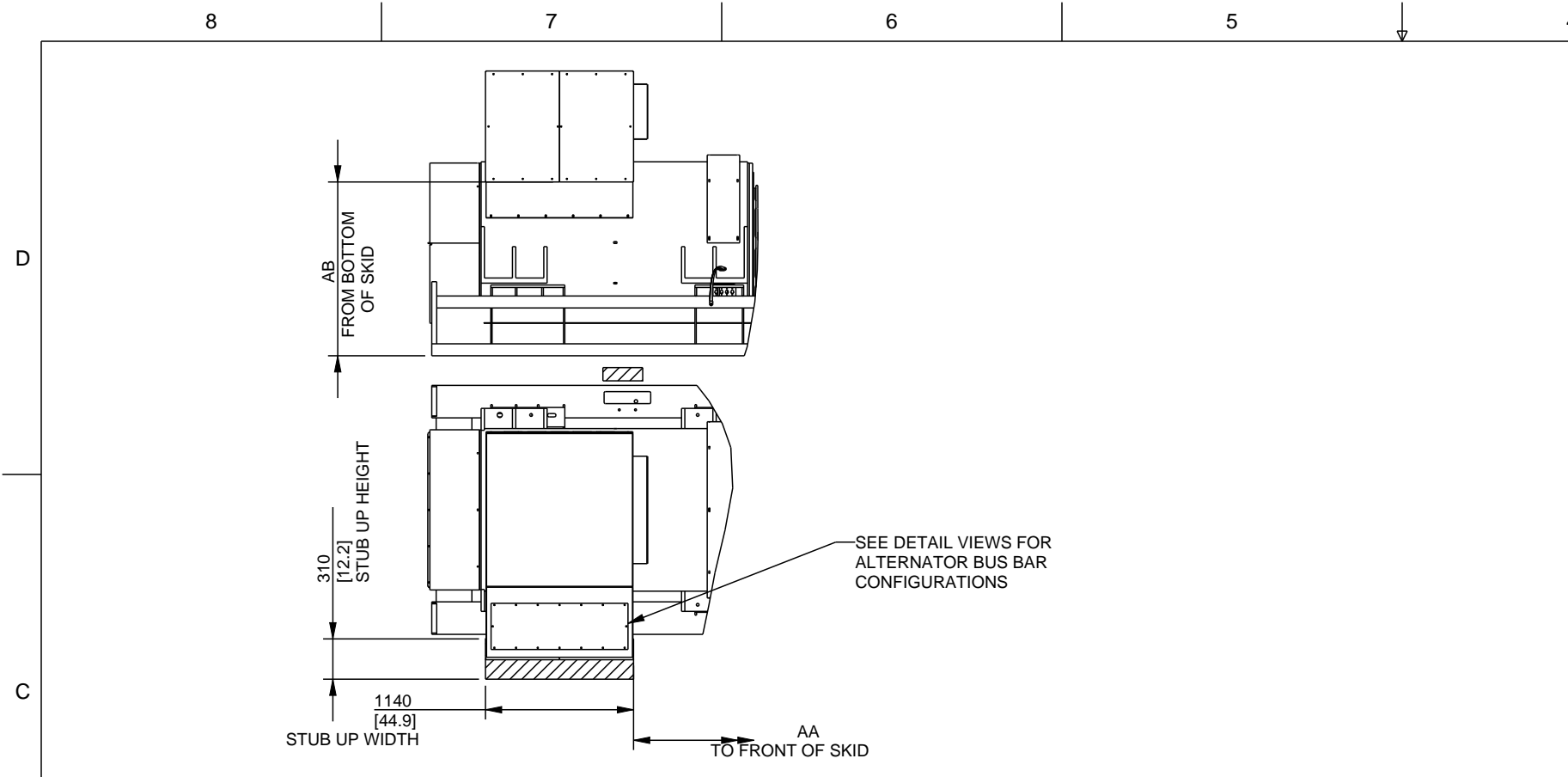
*GENERATOR LIFT POINTS
TO BE USED TO LIFT WITH RADIATOR

REV	DATE	ON COMPOSITE DWGS, SEE PART NO. FOR REVISION LEVEL	BY	DO NOT SCALE. REFERENCE THE MODEL FOR ALL UNSPECIFIED DIMENSIONS			
-	10-4-17	NEW DRAWING [CT178634]	BGW	UNLESS OTHERWISE SPECIFIED: ALL DIMENSIONS IN MILLIMETERS GENERAL TOLERANCES: N/A			
A	12-12-17	SEE SHEETS 3, 5, AND 8 [CT182319]	RRT				
				THIRD ANGLE PROJECTION 			
				APPROVALS	DATE	TITLE KOHLER. KOHLER, WISCONSIN 53044 THIS DRAWING IN DESIGN AND DETAIL IS KOHLER CO. PROPERTY AND MUST NOT BE USED EXCEPT IN CONNECTION WITH KOHLER CO. WORK. ALL RIGHTS OF DESIGN OR INVENTION ARE RESERVED. SCALE 0.05 CAD NO. SHEET 2 of 8	
				DRAWN	BGW		
				CHECKED	DJV		
				APPROVED	TAS		
						ADV-8955	

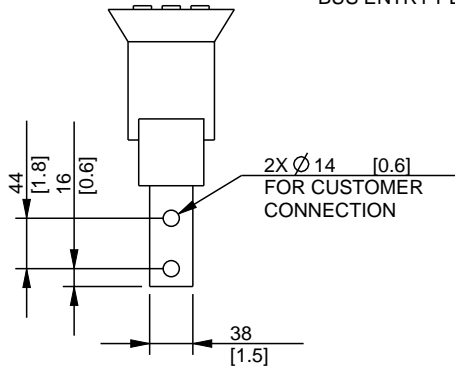
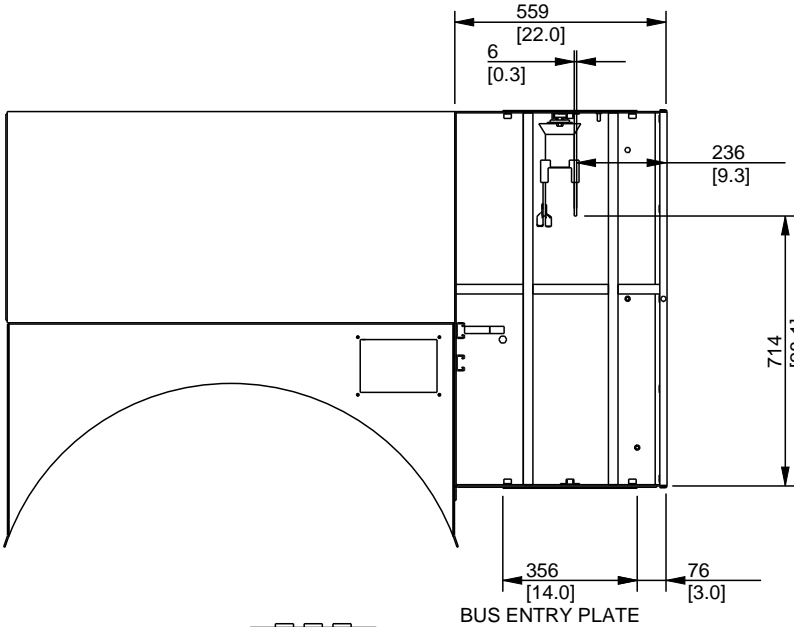
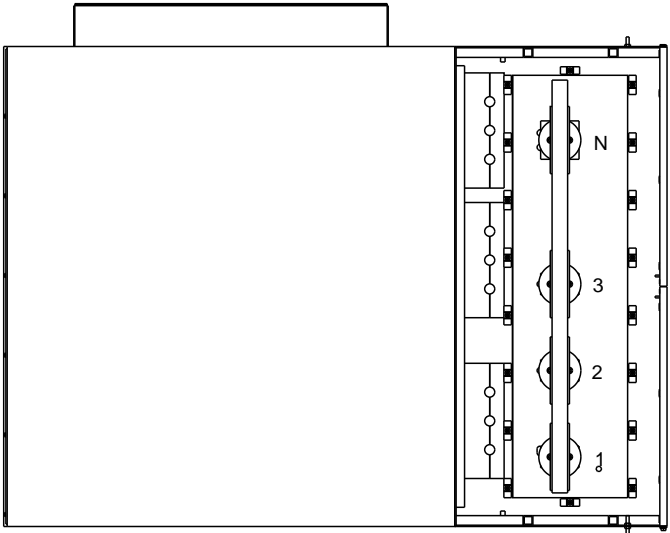


REMOTE RADIATOR
2800, KD3000, KD3250
KD83V16

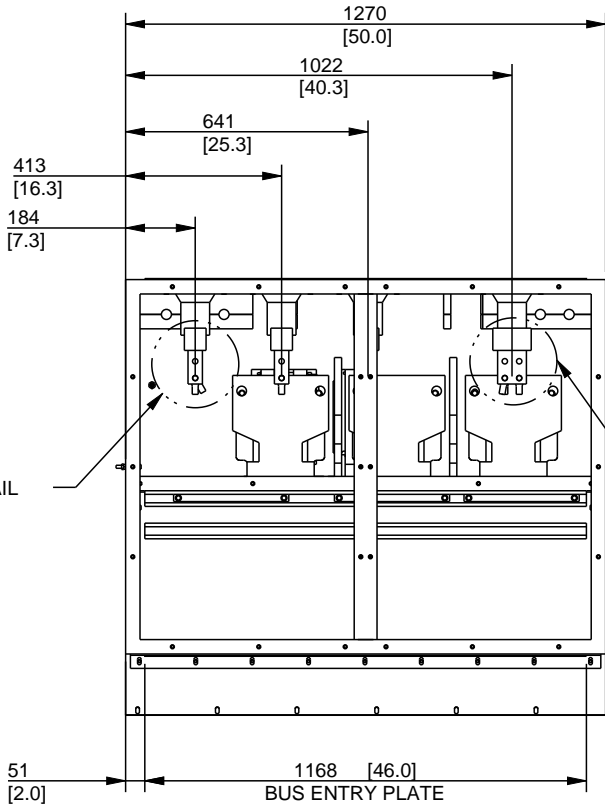




MODEL	VOLTAGE	AA	AB
KH09370TO4D	6600V	4276 [168]	1225 [48]
KH09370TO4D	13800V, 13200V, 12470V, 11000V	4276 [168]	1225 [48]
KH07632TO4D	6600V	4212 [166]	1225 [48]
KH07632TO4D	4160V	4212 [166]	1225 [48]
KH07632TO4D	13800V, 13200V, 12470V, 11000V	4212 [166]	1225 [48]
KH07631TO4D	6600V	4212 [166]	1225 [48]
KH07631TO4D	4160V	4212 [166]	1225 [48]
KH07631TO4D	13800V, 13200V, 12470V, 11000V	4212 [166]	1225 [48]
KH06670TO4D	6600V	4059 [160]	1225 [48]
KH06670TO4D	13800V, 13200V, 12470V, 11000V	4059 [160]	1225 [48]
KH09270TO4D	13800V, 13200V, 12470V, 11000V	4066 [160]	1137 [45]
KH09270TO4D	6600V	4066 [160]	1137 [45]
KH08100TO4D	13800V, 13200V, 12470V, 11000V	3965 [156]	1137 [45]
KH08100TO4D	6600V	3965 [156]	1137 [45]
KH07630TO4D	13800V, 13200V, 12470V, 11000V	3889 [153]	1137 [45]
KH07630TO4D	6600V	3889 [153]	1137 [45]
KH07080TO4D	13800V, 13200V, 12470V, 11000V	3838 [151]	1137 [45]
KH07080TO4D	6600V	3838 [151]	1137 [45]

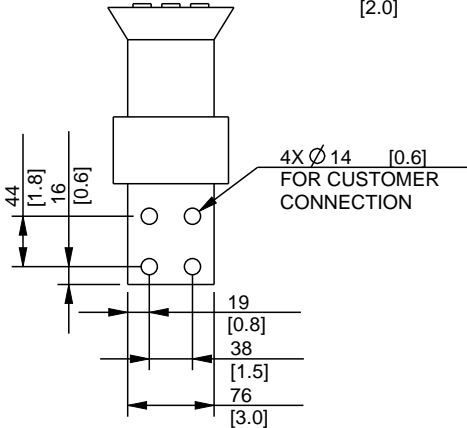


PHASE TERMINAL DETAIL



PHASE TERMINAL DETAIL

NEUTRAL TERMINAL DETAIL

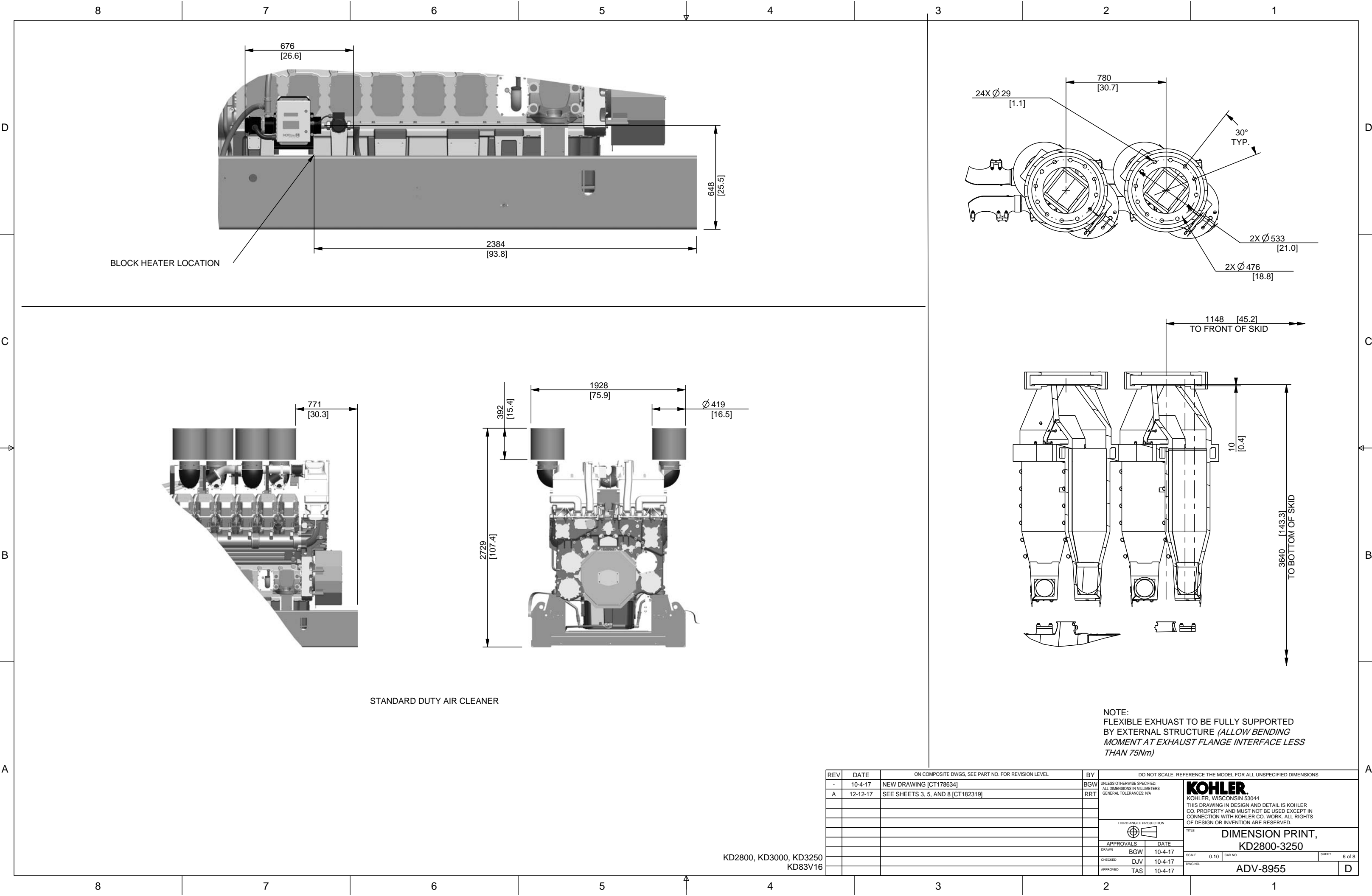


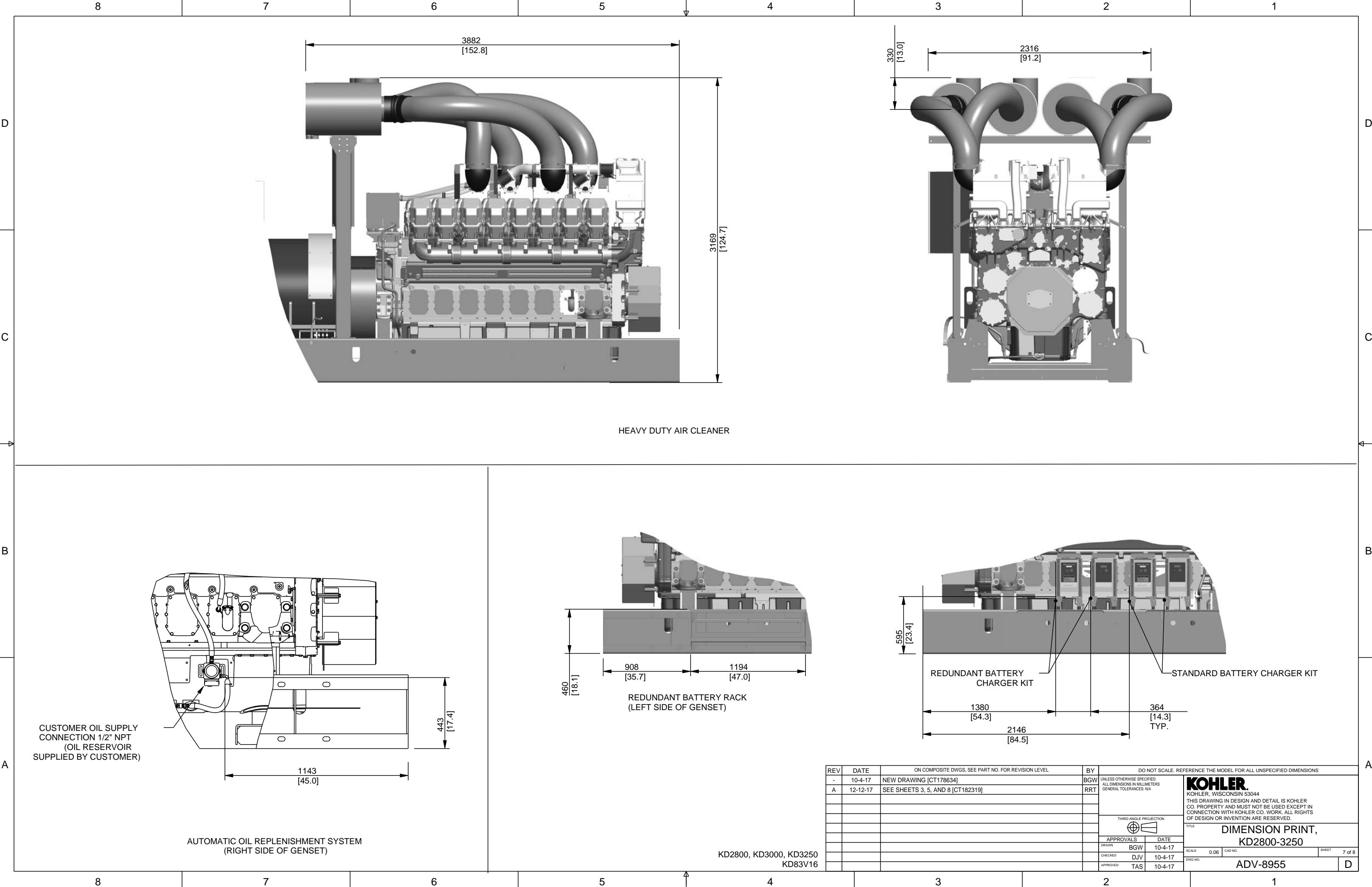
NEUTRAL TERMINAL DETAIL


REV	DATE	ON COMPOSITE DWGS, SEE PART NO. FOR REVISION LEVEL	BY	DO NOT SCALE. REFERENCE THE MODEL FOR ALL UNSPECIFIED DIMENSIONS			
-	11-16-17	NEW DRAWING [CT178634]	BGW	UNLESS OTHERWISE SPECIFIED: ALL DIMENSIONS IN MILLIMETERS GENERAL TOLERANCES: N/A			
A	12-12-17	(B-4;-5) FRONT PANEL REMOVED; SEE SHEETS 3 AND 8 [CT182319]	RRT				
				THIRD ANGLE PROJECTION			
				APPROVALS	DATE	TITLE KOHLER. KOHLER, WISCONSIN 53044 THIS DRAWING IN DESIGN AND DETAIL IS KOHLER CO. PROPERTY AND MUST NOT BE USED EXCEPT IN CONNECTION WITH KOHLER CO. WORK. ALL RIGHTS OF DESIGN OR INVENTION ARE RESERVED.	
				DRAWN	BGW		
				CHECKED	DJV		
				APPROVED	TAS		
				SCALE	0.30	CAD NO.	SHEET 5 of 8
				DWG NO.	ADV-8955	D	

KOHLER.
KOHLER, WISCONSIN 53044
THIS DRAWING IN DESIGN AND DETAIL IS KOHLER CO. PROPERTY AND MUST NOT BE USED EXCEPT IN CONNECTION WITH KOHLER CO. WORK. ALL RIGHTS OF DESIGN OR INVENTION ARE RESERVED.

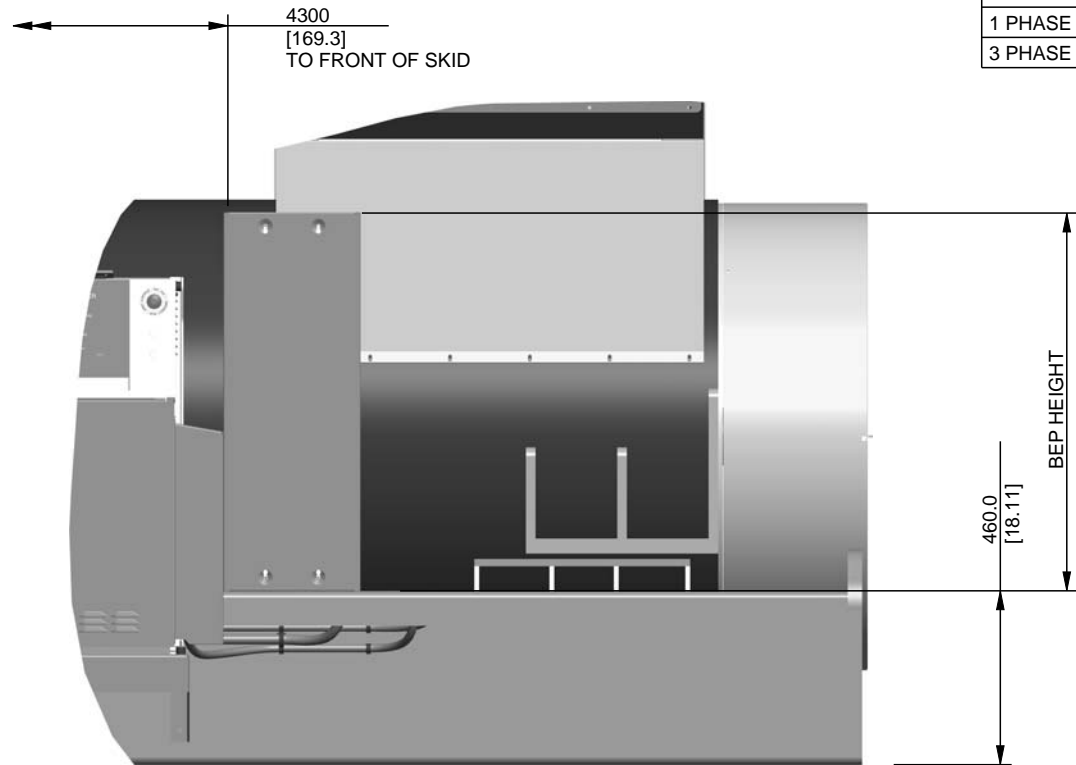
DIMENSION PRINT,
KD2800-3250





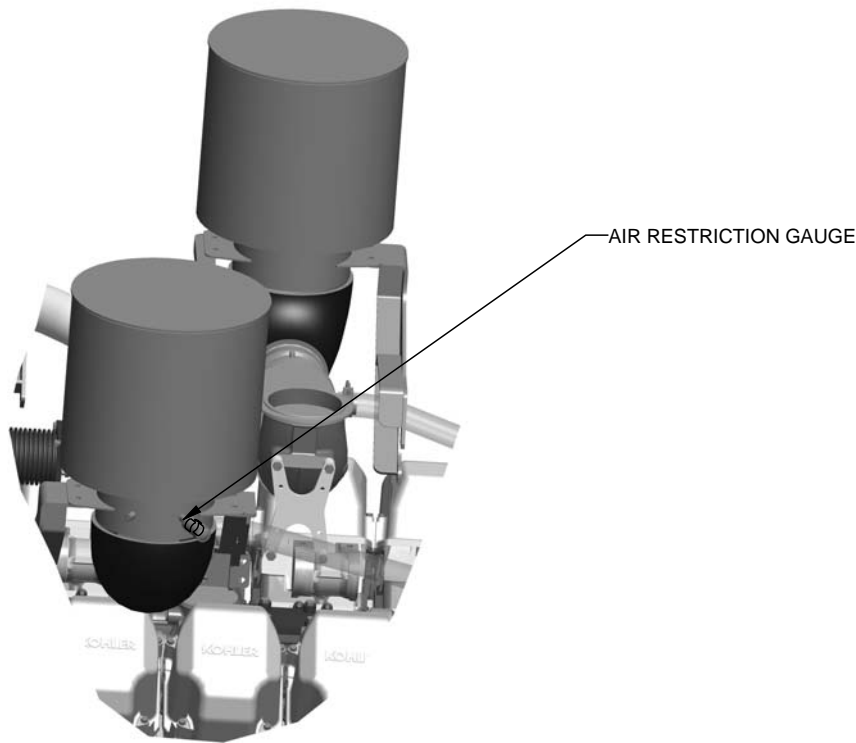
REV	DATE	ON COMPOSITE DWGS, SEE PART NO. FOR REVISION LEVEL	BY	DO NOT SCALE. REFERENCE THE MODEL FOR ALL UNSPECIFIED DIMENSIONS			
-	10-4-17	NEW DRAWING [CT178634]	BGW	UNLESS OTHERWISE SPECIFIED: ALL DIMENSIONS IN MILLIMETERS GENERAL TOLERANCES: NA			
A	12-12-17	SEE SHEETS 3, 5, AND 8 [CT182319]	RRT				
				THIRD ANGLE PROJECTION 			
				APPROVALS	DATE	TITLE KOHLER. KOHLER, WISCONSIN 53044 THIS DRAWING IN DESIGN AND DETAIL IS KOHLER CO. PROPERTY AND MUST NOT BE USED EXCEPT IN CONNECTION WITH KOHLER CO. WORK. ALL RIGHTS OF DESIGN OR INVENTION ARE RESERVED.	
				DRAWN	BGW		
				CHECKED	DJV		
				APPROVED	TAS		
						SCALE 0.06	CAD NO. SHEET 7 of 8
						DWG NO. ADV-8955	D

KD2800, KD3000, KD3250
KD83V16

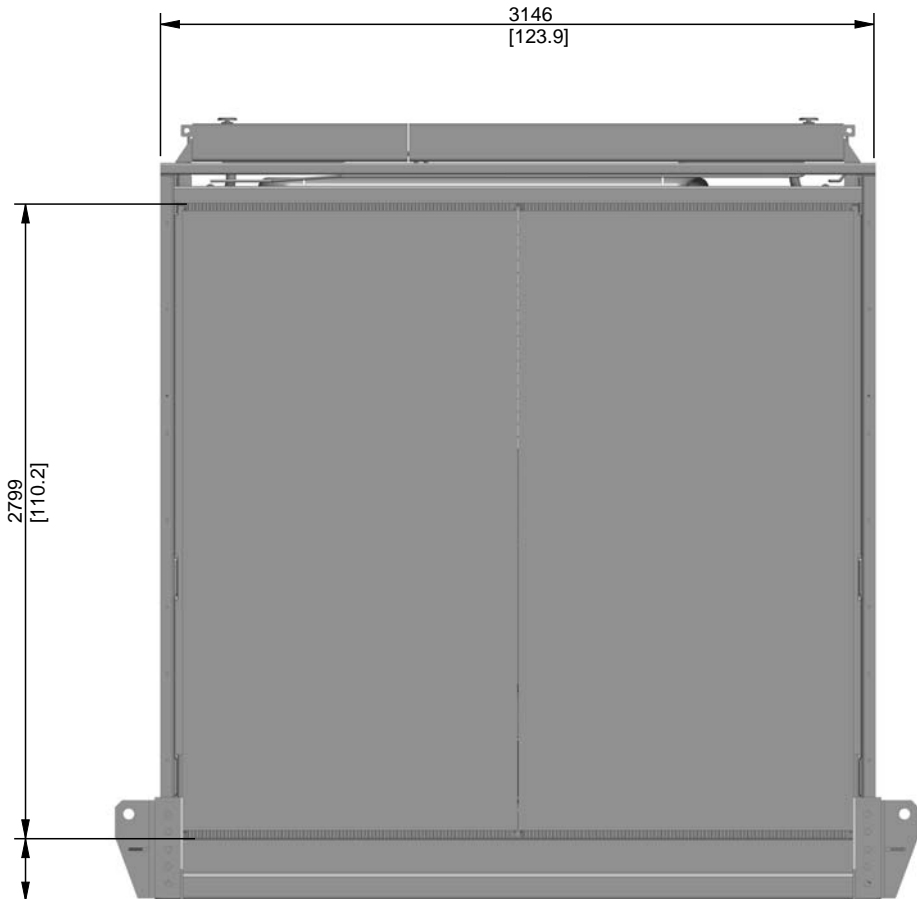


TYPE	BEP HEIGHT
1 PHASE	758 [30]
3 PHASE	1000 [39]

BASIC ELECTRICAL PACKAGE (BEP) LOAD CENTER




AIR FILTER RESTRICTION INDICATOR
(LEFT SIDE OF GENSET)



DUCT FLANGE MOUNTING

KD2800, KD3000, KD3250
KD83V16

REV	DATE	ON COMPOSITE DWGS, SEE PART NO. FOR REVISION LEVEL	BY	DO NOT SCALE. REFERENCE THE MODEL FOR ALL UNSPECIFIED DIMENSIONS			
-	10-4-17	NEW DRAWING [CT178634]	BGW	UNLESS OTHERWISE SPECIFIED: ALL DIMENSIONS IN MILLIMETERS GENERAL TOLERANCES: N/A			
A	12-12-17	(C-3) DUCT FLANGE MOUNTING VIEW ADDED; SEE SHEETS 3 AND 5 [CT182319]	RRT				
				THIRD ANGLE PROJECTION 			
				APPROVALS	DATE	TITLE KOHLER. KOHLER, WISCONSIN 53044 THIS DRAWING IN DESIGN AND DETAIL IS KOHLER CO. PROPERTY AND MUST NOT BE USED EXCEPT IN CONNECTION WITH KOHLER CO. WORK. ALL RIGHTS OF DESIGN OR INVENTION ARE RESERVED.	
				DRAWN	BGW		
				CHECKED	DJV		
				APPROVED	TAS		
				SCALE 0.06		CAD NO.	SHEET 8 of 8
				DWG NO.		ADV-8955	

KOHLER.
KOHLER, WISCONSIN 53044
THIS DRAWING IN DESIGN AND DETAIL IS KOHLER CO. PROPERTY AND MUST NOT BE USED EXCEPT IN CONNECTION WITH KOHLER CO. WORK. ALL RIGHTS OF DESIGN OR INVENTION ARE RESERVED.

TITLE
**DIMENSION PRINT,
KD2800-3250**

SCALE 0.06 CAD NO. SHEET 8 of 8

ADV-8955

D