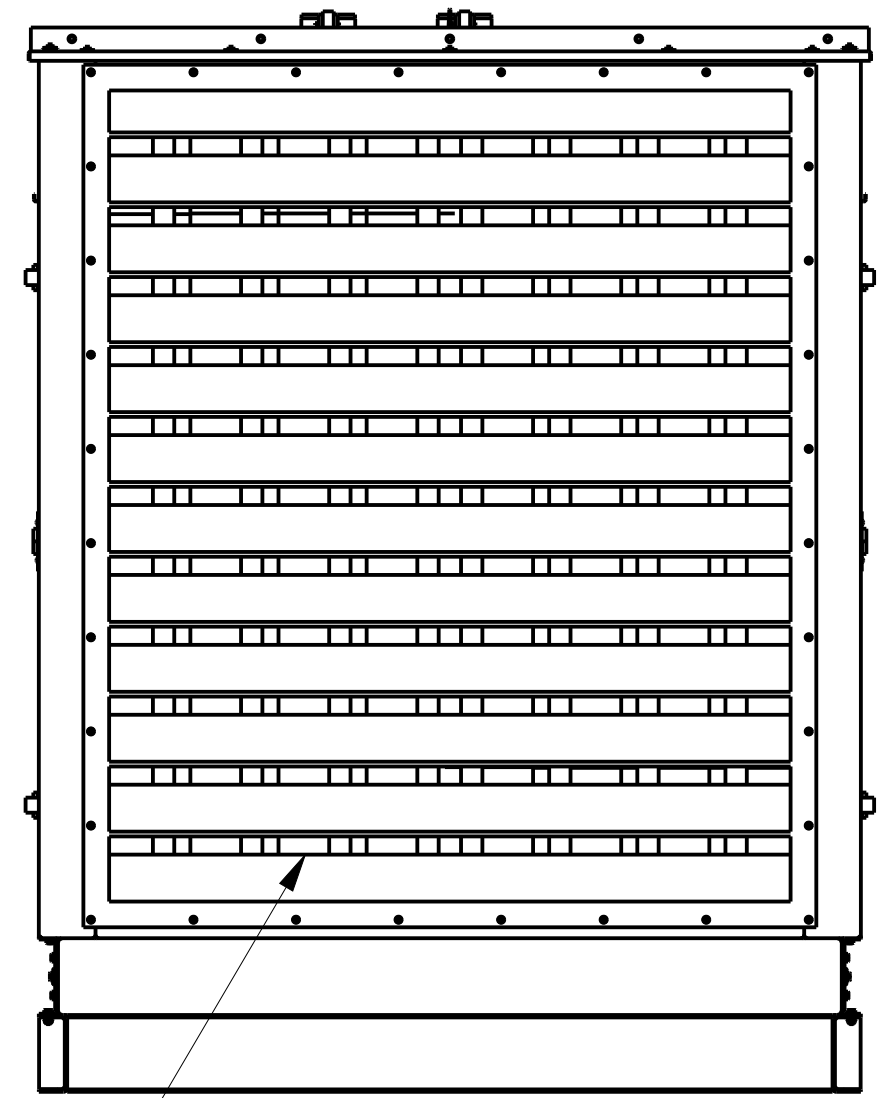
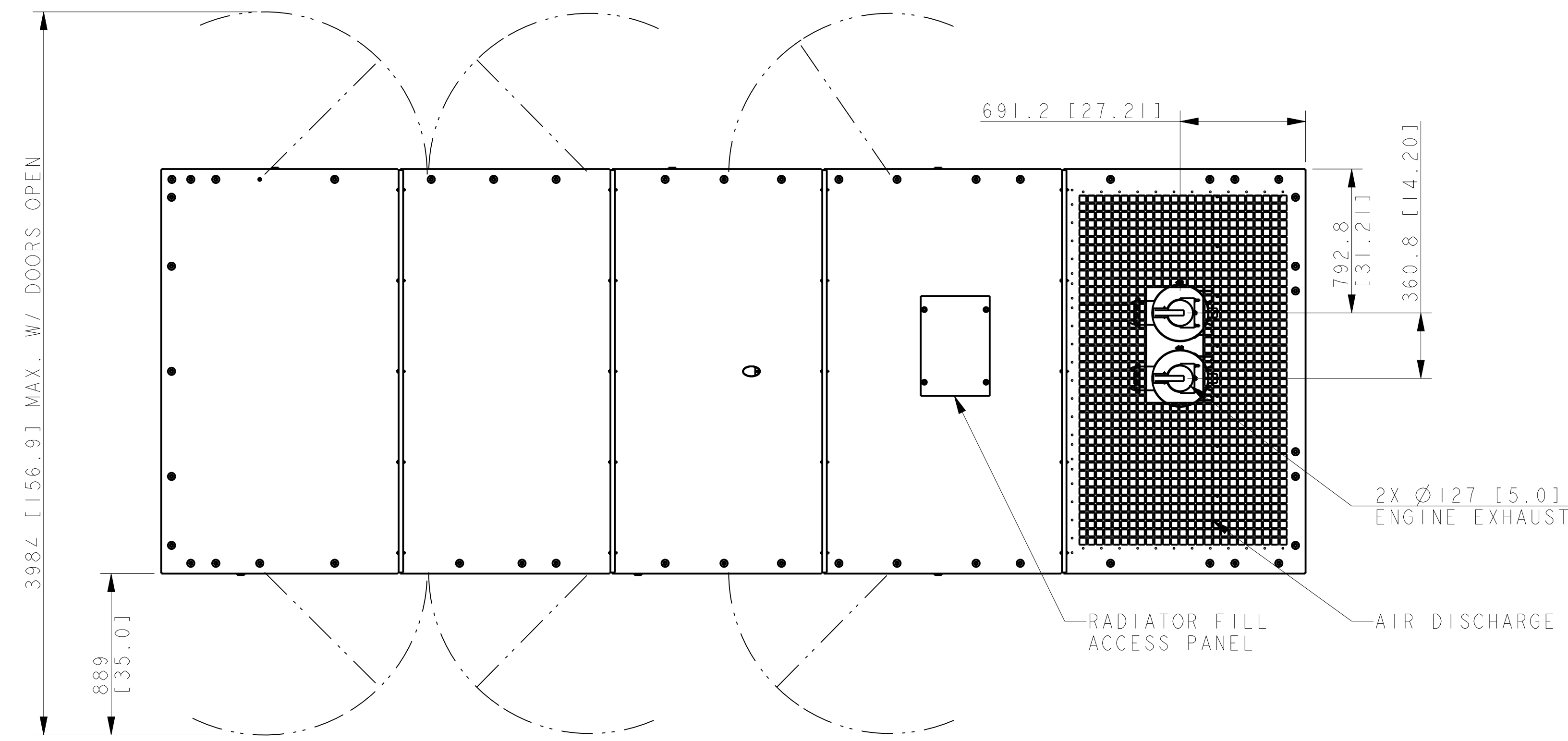
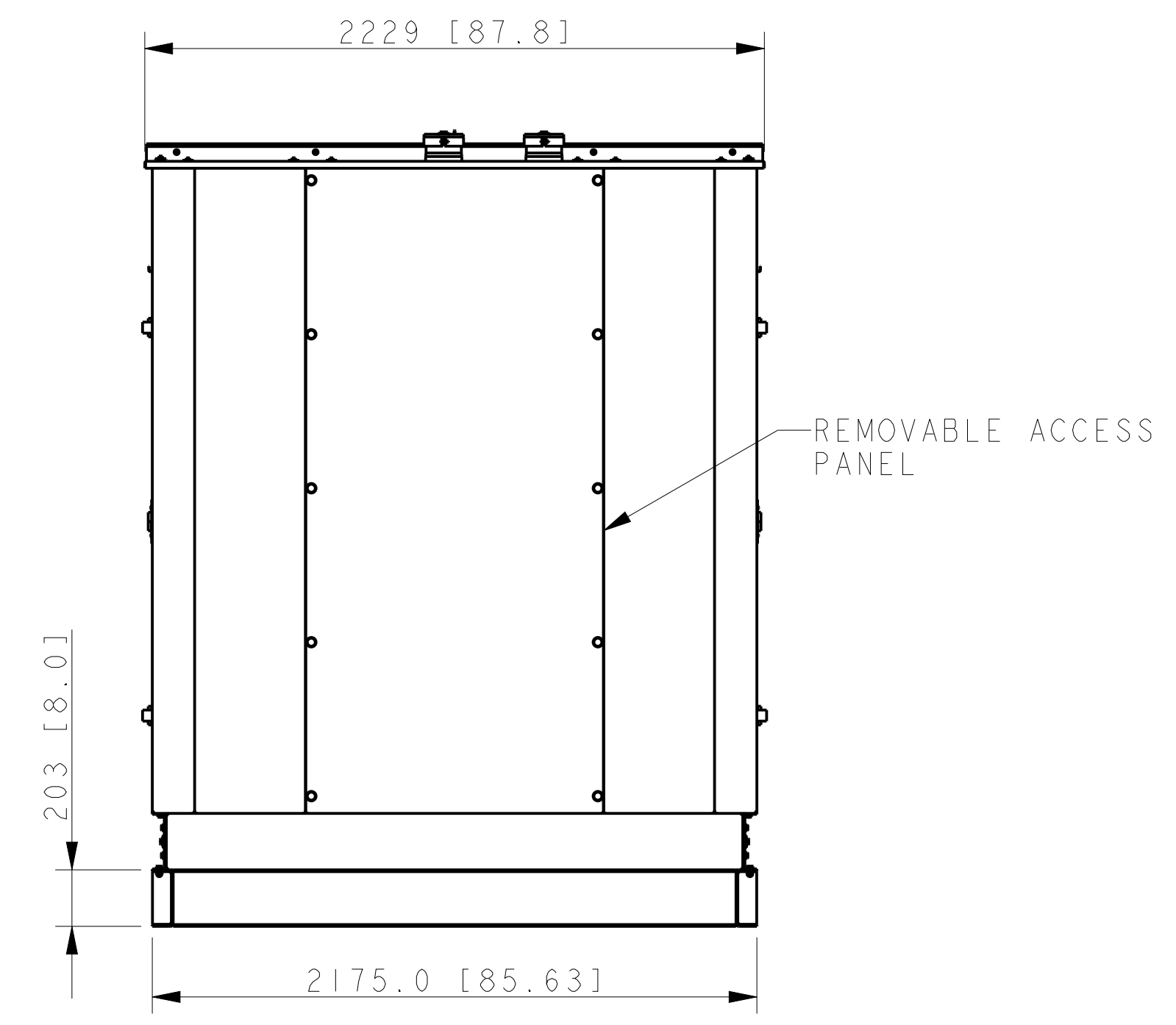
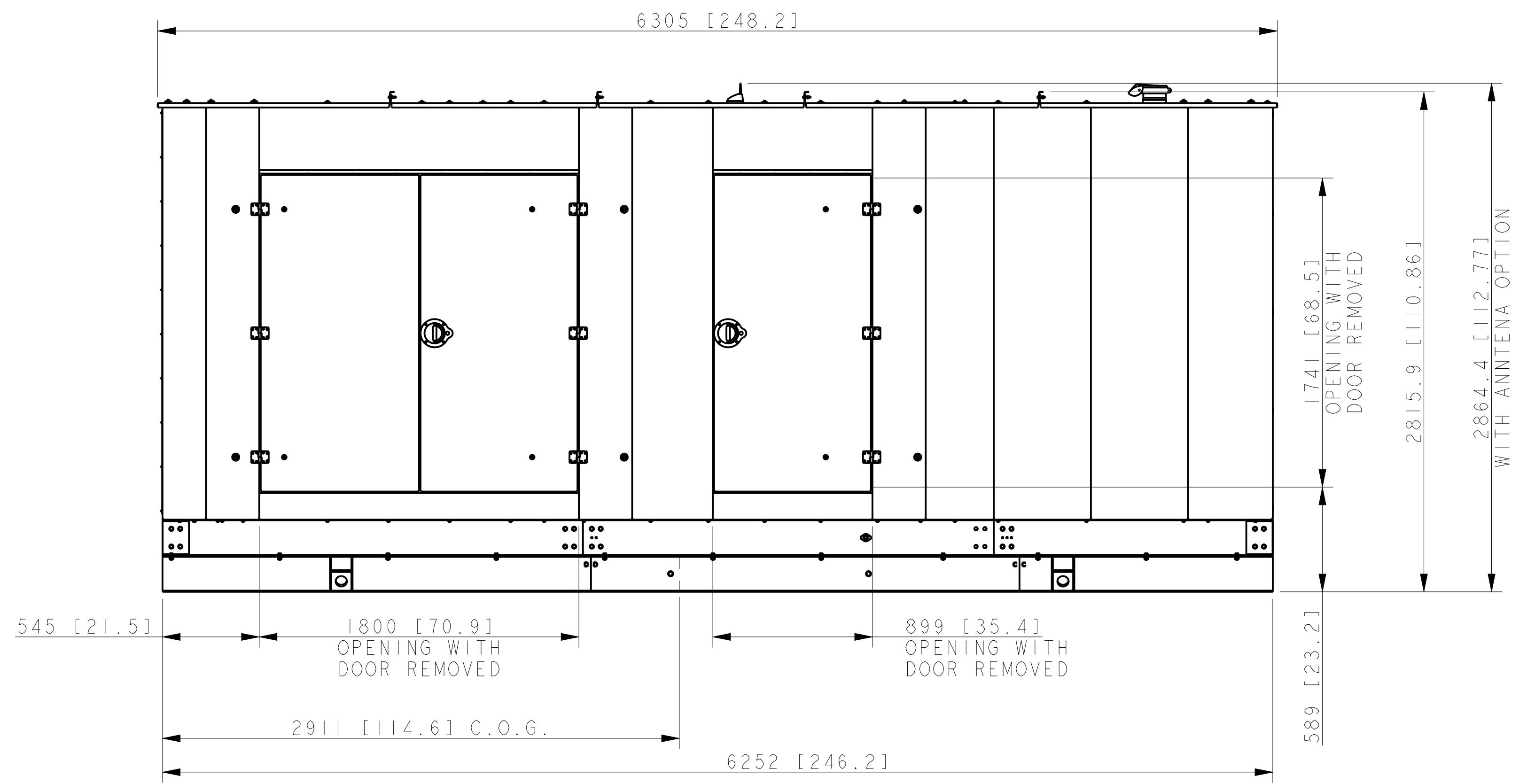


8 7 6 5 4 3 2 1

MODEL	ENCLOSURE WEIGHT	
	STEEL WEATHER	1315 Kg [2900 LBS]
300-350 REZXB / RZXB	STEEL SOUND	1400 Kg [3100 LBS]
	ALUMINUM SOUND	910 Kg [2000 LBS]



1869 X 2116 [74 X 83]  
FIXED AIR INTAKE  
LOUVER (STANDARD)



300-350kW DOOSAN  
ENCLOSURE W/LIFTING BASE

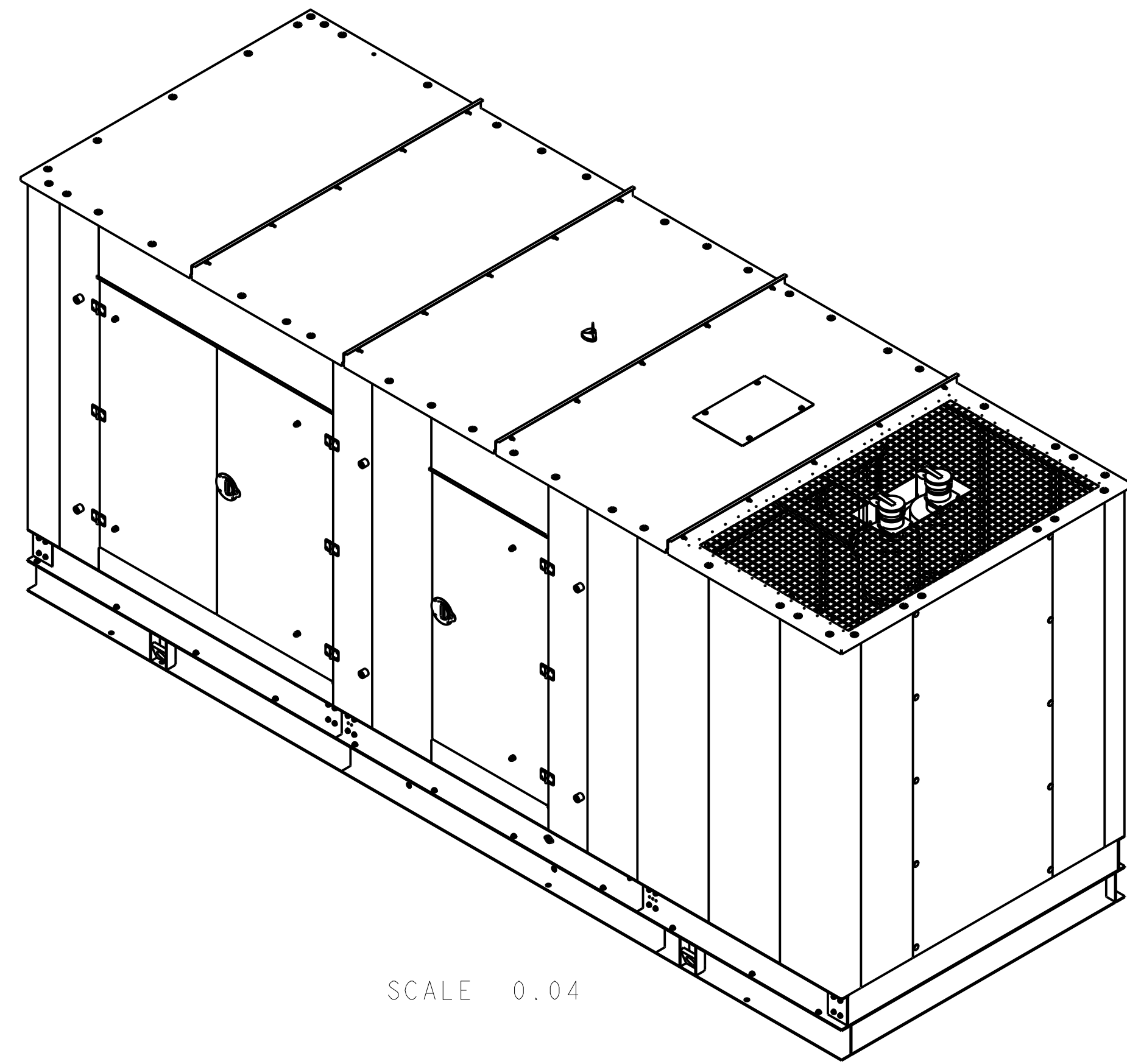
REV	DATE	ON COMPOSITE DWGS, SEE PART NO. FOR REVISION LEVEL	BY
-	6-2-11	NEW DRAWING [90394]	GFR
A	11-25-13	SEE SHEET 3 [CT64662]	SAM
B	7-17-17	(C-3) NOTE UPDATED, SEE SHEET 2 [CT175008]	CCL

APPROVALS	DATE
DRAWN GFR	6-2-11
CHECKED JMS	6-2-11
APPROVED AJD	6-2-11

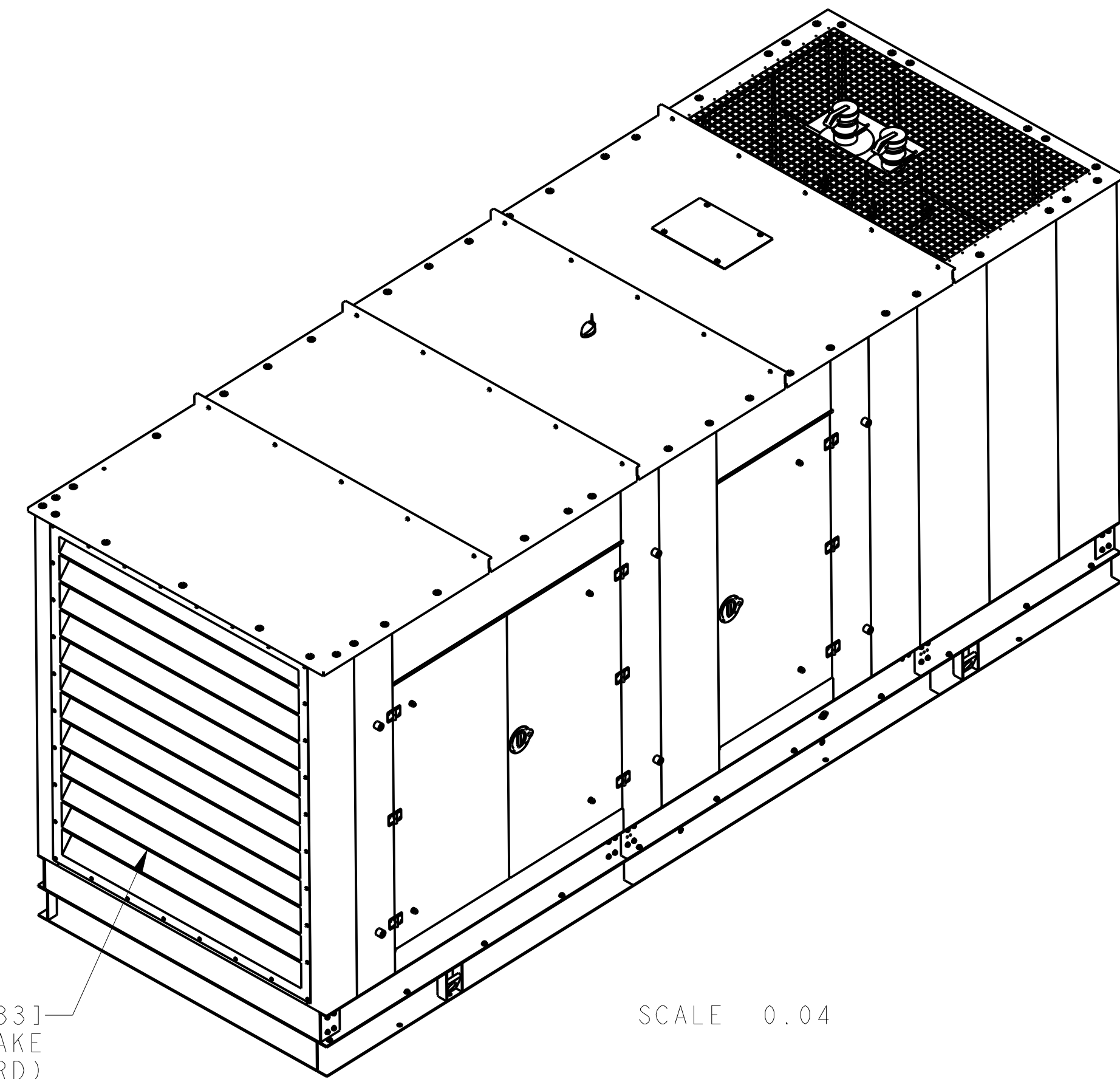
**KOHLER CO.** METRIC PRO-E  
POWER SYSTEMS, KOHLER, WI 53044 U.S.A.  
THIS DRAWING IN DESIGN AND DETAIL IS KOHLER CO. PROPERTY AND MUST NOT BE USED EXCEPT IN CONNECTION WITH KOHLER CO. WORK. ALL RIGHTS OF DESIGN OR INVENTION ARE RESERVED.

TITLE: **DIMENSION PRINT**

SCALE: 0.05 CAD NO. SHEET 1 of 3  
DWG NO. **ADV-8162**

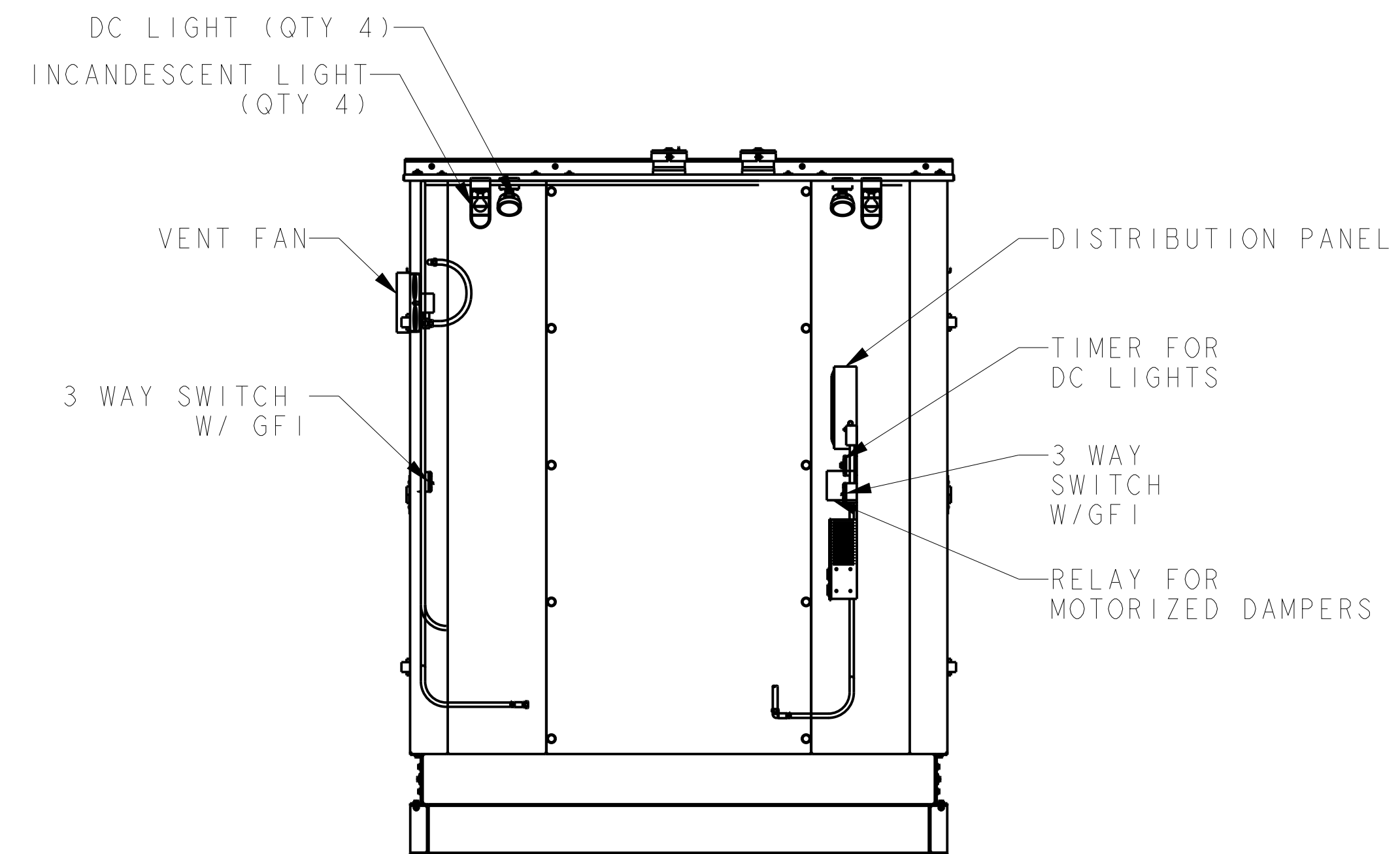
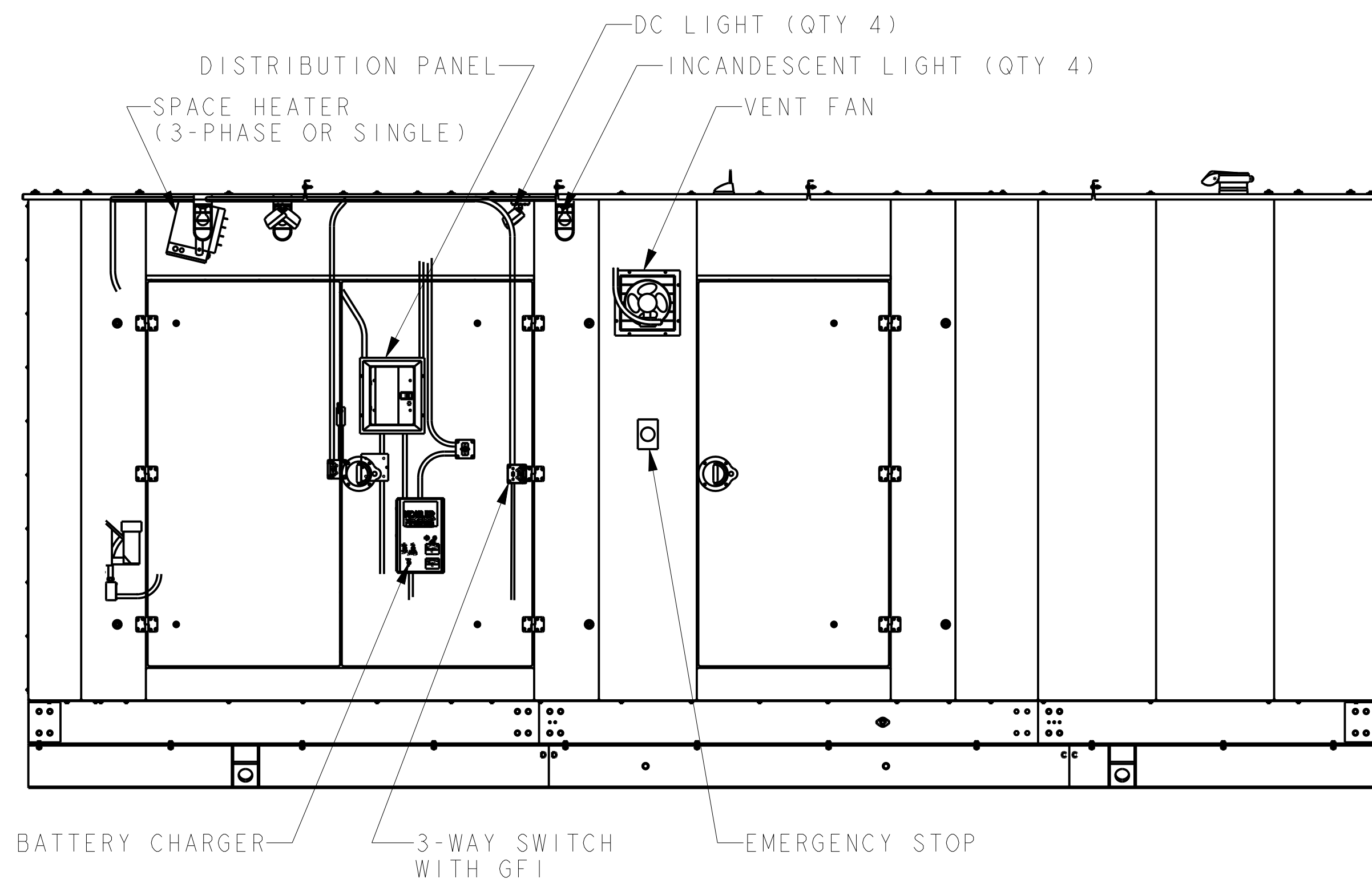


SCALE 0.04



SCALE 0.04

1869 X 2116 [74 X 83]  
FIXED AIR INTAKE  
LOUVER (STANDARD)  
(MOTORIZED LOUVERS OPTIONAL)



REV	DATE	ON COMPOSITE DWGS, SEE PART NO. FOR REVISION LEVEL	BY	UNLESS OTHERWISE SPECIFIED - 1) DIMENSIONS ARE IN MILLIMETERS 2) TOLERANCES ARE:
-	6-2-11	NEW DRAWING [90394]	GFR	X.XX ± 0.25
A	11-25-13	SEE SHEET 3 [CT64662]	SAM	X.X ± 1.0
B	7-17-17	(B-4, -6) VENT FAN LOCATION UPDATED, EMERGENCY STOP LOCATION ADDED, (B-1) VIEW REMOVED, SEE SHEET 1 [CT175008]	CCL	X ± 1.5 ANGLES ± 0° 30' MAX.
				THIRD ANGLE PROJECTION
APPROVALS		DATE		
DRAWN		GFR 6-2-11		
CHECKED		JMS 6-2-11		
APPROVED		AJD 6-2-11		

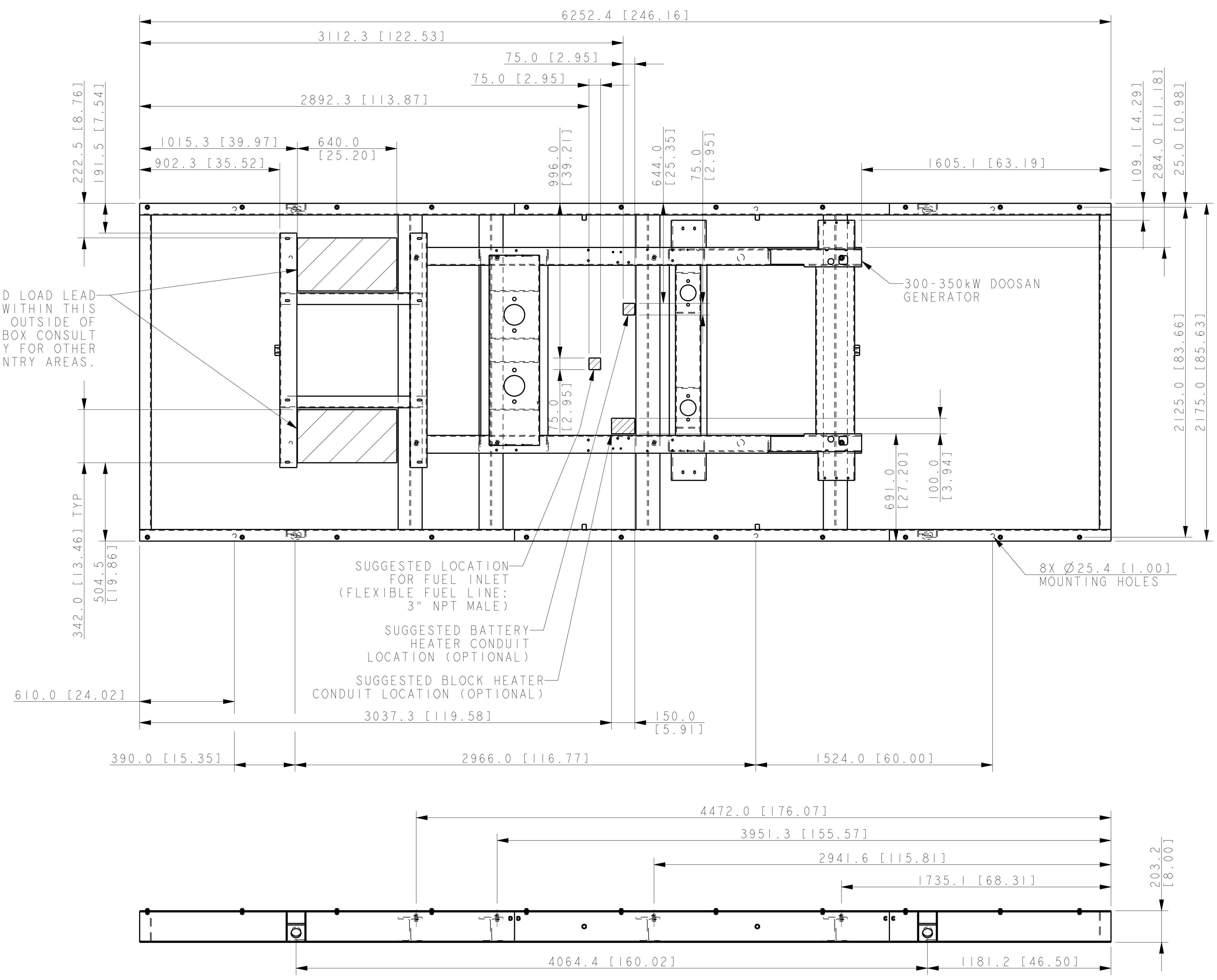
**KOHLER CO.** METRIC PRO-E  
POWER SYSTEMS, KOHLER, WI 53044 U.S.A.  
THIS DRAWING IN DESIGN AND DETAIL IS KOHLER CO. PROPERTY AND MUST NOT BE USED EXCEPT IN CONNECTION WITH KOHLER CO. WORK. ALL RIGHTS OF DESIGN OR INVENTION ARE RESERVED.

TITLE: **DIMENSION PRINT**

SCALE 0.05 CAD NO. SHEET 2 of 3  
DWG NO. **ADV-8162** D

300-350kW DOOSAN  
ENCLOSURE W/LIFTING BASE

SUGGESTED LOAD LEAD ENTRANCE WITHIN THIS BOUNDARY. OUTSIDE OF JUNCTION BOX CONSULT FACTORY FOR OTHER ENTRY AREAS.



300-350kW DOOSAN ENCLOSURE W/LIFTING BASE

REV	DATE	ON COMPOSITE DWGS. SEE PART NO. FOR REVISION LEVEL	BY
-	6-2-11	NEW DRAWING [90394]	GFR
A	11-25-13	(C-3) DIM'S TO HOLES ADDED [CT64662]	SAM
B	7-17-17	SEE SHEET 1 & 2 [CT175008]	CCL

UNLESS OTHERWISE SPECIFIED -	
1) DIMENSIONS ARE IN MILLIMETERS	2) TOLERANCES ARE:
X.XX ± 0.25	X.X ± 1.0
X ± 1.5	ANGLES ± 0° 30'
SURFACE FINISH MAX.	
THIRD ANGLE PROJECTION	
APPROVALS	DATE
DRAWN GFR	6-2-11
CHECKED JMS	6-2-11
APPROVED AJD	6-2-11

**KOHLER CO.** METRIC PRO-E  
 POWER SYSTEMS, KOHLER, WI 53044 U.S.A.  
 THIS DRAWING IN DESIGN AND DETAIL IS KOHLER CO. PROPERTY AND MUST NOT BE USED EXCEPT IN CONNECTION WITH KOHLER CO. WORK. ALL RIGHTS OF DESIGN OR INVENTION ARE RESERVED.

TITLE: **DIMENSION PRINT**

SCALE: 0.07 CAD NO. SHEET 3 of 3  
 DWG NO. **ADV-8162** D