



THE PLAN BEHIND THE POWER.

PLANNED MAINTENANCE PROGRAMS



EARNING LIFELONG RELATIONSHIPS

Family owned and operated since 1947, Buckeye Power Sales is the solutions provider for businesses, contractors, engineers, municipalities, and homeowners. From power generators to light construction to grounds care - we have the equipment, parts & service to help you get the job done.



www.buckeyepowersales.com

PLANNED MAINTENANCE

PLANNED MAINTENANCE PROGRAMS

Just like any other equipment, your onsite power system needs periodic maintenance. Buckeye Power Sales offers customized planned maintenance (PM) programs to keep it in top condition and ready to operate when you need it.

All of our service technicians are factory certified professionals and our service trucks are continuously restocked with essential parts to ensure that each technician has what they need upon arrival. We repair all generator and automatic transfer switch makes and models.

PM programs include:

- Regularly scheduled visits
- Multi-point inspections
- Fluid and filter changes
- Environmentally safe waste disposal
- Complete system testing



PROGRAM OPTIONS

ANNUAL

Annual planned maintenance programs include inspection of all equipment according to our multi-point inspection report.

Also included:

- Change oil, oil filter & fuel filter
- Test and treat coolant, as required
- Dispose of used oil and filters in an EPA approved manner
- Replace air filter, if needed (for an additional fee)
- We will make any additional necessary repairs with customer approval*

*Repairs are not included in the price of the planned maintenance program. Repairs will be billed at our prevailing rates for parts and our discounted labor rate for planned maintenance customers.

SEMI-ANNUAL

The semi-annual plan includes the same services provided with an annual PM programs with an additional inspection performed at six (6) months.

QUARTERLY

The quarterly plan includes the same services provided with an annual PM with an additional inspection performed quarterly.

MONTHLY

The monthly plan includes the same services provided with an annual PM with an additional inspection performed monthly.

MULTI-YEAR

Extended maintenance programs to cover the service on your generators for the future. This allows you to lock in current rates for future services. Additionally, the cost of future services can be spread out over a longer period of time, allowing you to budget appropriately. We can customize our maintenance programs for most any situation or application.

NOTE: semi-annual, quarterly & monthly inspections do NOT include filter & fluid changes.



ADDITIONAL SERVICES AVAILABLE WITH PLANNED MAINTENANCE PROGRAMS

LOAD BANK TESTING

It is our recommendation that you should regularly plan on a load bank test to put your generator under the appropriate load to bring the generator up to rated temperature and test its performance. This service can be performed in addition to any of our maintenance programs. We have the capability to load test power systems up to three (3) megawatts, and have an inventory large enough to allow us to schedule multiple load bank tests in any of our locations.

- Load banking tests your system's capability without interrupting standard utility services to your facility.
- The test is the only sure way to tell if your system is capable of handling the load that is required.
- When life safety electrical power needs are involved, this test is required by law in accordance with the National Fire Protection Code 100 "Standard for Emergency and Standby Power Systems."

Section 8.4.2.3 states: "Diesel-powered EPS installations that do not meet the requirements of 8.4.2 shall be exercised monthly with the available EPS load and shall be exercised annually with supplemental loads at not less than 50% of the EPS nameplate kW rating for 30 continuous minutes and at not less than 75% of the EPS nameplate kW rating for one (1) continuous hour for a total test duration of not less than 1.5 continuous hours."

A.8.4.2.3 "The generator set manufacturer should be consulted where the nameplate data does not indicate rating type. There is a difference between prime and standby ratings. For example there are usually two (2) kW nameplate ratings found on most engine-driven generators: "Standby" and "Prime". There can be a significant difference between the resulting kW figures when calculating 30% of nameplate - for example a 100kW standby generator is normally considered an 80kW set for prime power: $100\text{kW} \times 30\% = 30\text{kW}$ but $80\text{kW} \times 30\%$

BATTERY REPLACEMENT

Battery failure is one of the most common reasons standby power systems fails to start. Replacement of your battery every two (2) years increases system reliability.

COOLING SYSTEM MAINTENANCE

Cooling system testing and treatment is standard with a planned maintenance agreement. As coolant hoses age, they crack and split. Replacement coolant hoses is recommended at least every three (3) to five (5) years to maintain reliability. Engine block heater inspection and replacement helps ensure your power system will start when cold weather hits.

THERMAL IMAGING

Thermal imaging or thermography detects heat patterns or temperature changes in objects. Today's thermal imagers have the ability to view live images of heat emitted from equipment. This allows a technician to discover problems prior to costly downtime or monitor developing problems. One of the biggest benefits of thermal imaging is the ability to perform inspections while the generator is under load. Since thermal imaging is a non-contact diagnostic tool, the technician can quickly scan the equipment from a safe distance.

OIL ANALYSIS

Oil analysis is a quick, non-destructive way to gauge the health of an engine by looking at what's in the oil. You can use oil analysis to see if there are any problems developing or check if the oil is working well in the engine.

ENGINE BELT REPLACEMENT

Engine belts are wear items that must be periodically replaced. Like coolant hoses, over time, belts become brittle, crack and split leading to unexpected failure.



OUR STORY

COMPANY HISTORY

Buckeye Power Sales Company, Inc. was founded by Edward Sebastian in 1947. From the very beginning we have been a servicing generator distributor serving Ohio, Indiana and Illinois with locations in Columbus, Cleveland, Cincinnati, Indianapolis and Chicago. As the oldest signed Kohler distributor we pride ourselves in providing premium service before, during and after the sale.

Our dedicated power facilities are designed for the processes of a company supplying and servicing customers for power. Headquartered in Columbus, Ohio the company started with just three employees and has now grown to employ 200+. Buckeye Power Sales is recognized as a leader of full service on-site power systems.

EXPERIENCE

We have a large installed base of generator set installations for standby and prime power. Our long list of repeat customers acquired over 75 years is a testimony to our success, reputation for quality work and experience in power generation.

All of our service technicians are thoroughly factory-trained professionals. And we don't limit ourselves to just the popular brand products - we repair all generator and automatic transfer switch makes and models.

Our experienced sales staff provides hands-on reliable support through all stages of the sales process.

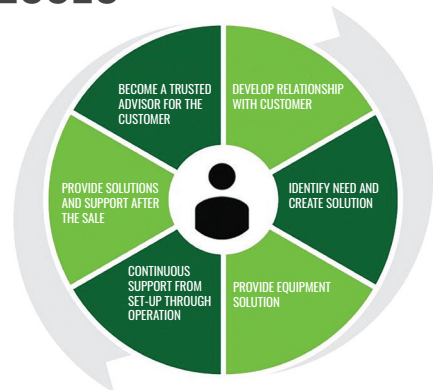
- Hands-on support from local people
- Engineering for design and application
- Load calculations
- Specifications
- Technical assistance
- After sales support for parts, warranty and maintenance

RESOURCES

A full service power supply distributor that makes a difference.

- Reliable support before, during and after the sale
- Fleet of service vans ensuring our products remain fully operational 24 hours a day, 7 days a week
- Full rental fleet
- Load testing generators
- On-site maintenance
- Dedicated generator facility
- Inventories of equipment and parts for rapid response
- Dealer network

PROCESSES



Buckeye Power Sales is your reliable power equipment partner. The BPS Flywheel, helps you get your job done by:

- Focusing on developing long term relationships with our customers
- Identifying your need and developing a solution
- Providing quality equipment that meets your needs
- Verifying your equipment is performing properly
- Supporting you after the sale
- Advising you when it's more practical to replace than to repair



COLUMBUS, OH | 8155 Howe Industrial Pkwy., Canal Winchester, OH 43110 | 614-751-4515

CINCINNATI, OH | 4992 Rialto Road, West Chester, OH 45069 | 513-755-2323

CLEVELAND, OH | 8465 Tower Drive, Twinsburg, OH 44087 | 330-425-9165

INDIANAPOLIS, IN | 1707 S. Franklin Road, Indianapolis, IN 46239 | 317-271-9661

CHICAGO, IL | 1308 Marquette Drive, Romeoville, IL 60446 | 630-914-3000

WWW.BPSCO.COM



For nationwide service capabilities. Call 918-836-8701